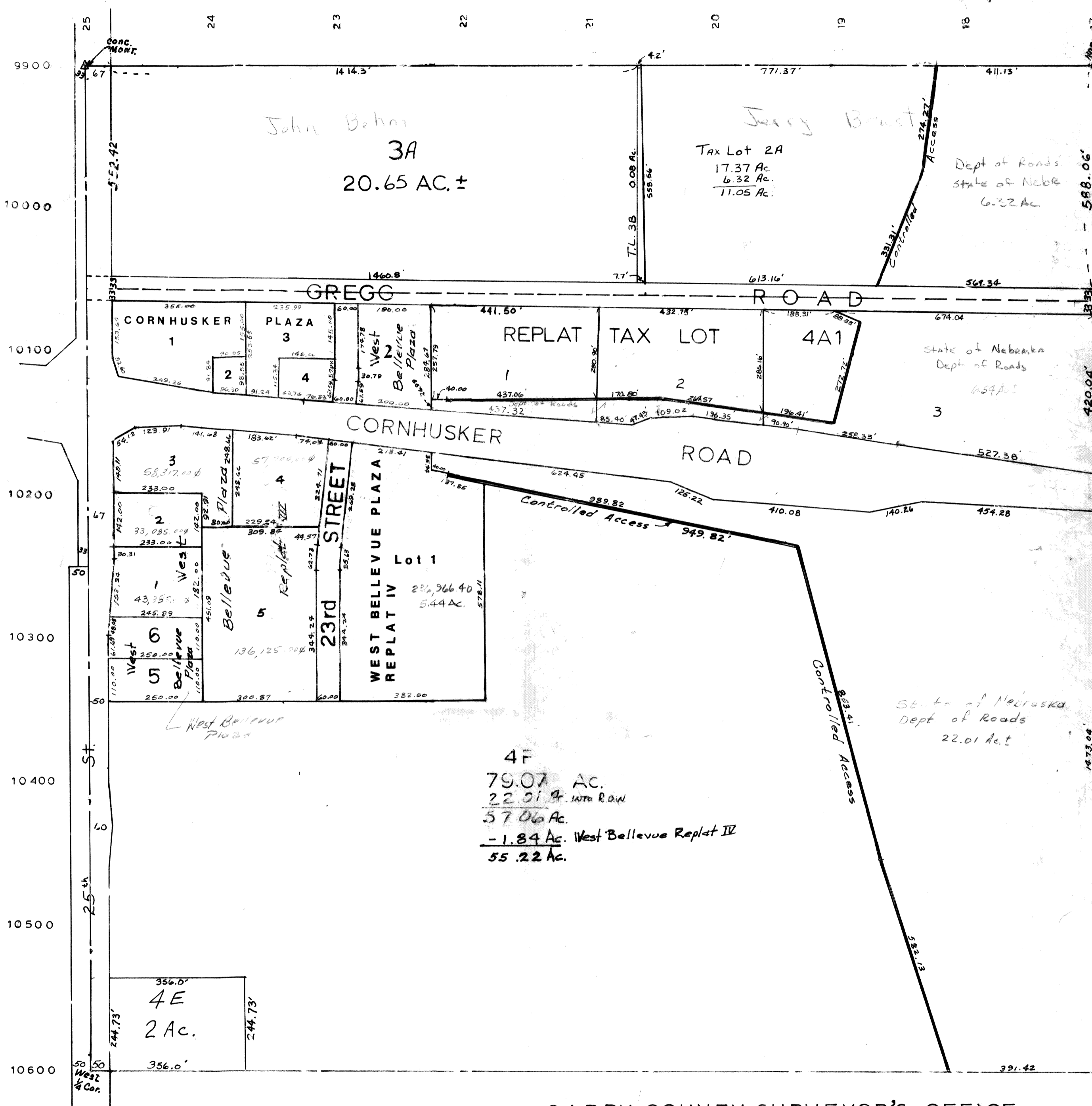


NW 1/4 SEC. 27-T14N-R13E.
SCALE - 1"=200'

RONALD A RYSTROM
SARPY COUNTY SURVEYOR

106C



SARPY COUNTY SURVEYOR'S OFFICE

JANUARY - 1965
JUNE - 1974
JANUARY - 1978
JUNE - 1978
October 2, 1985
August 22, 1986
Sept. 19, 1986
July 15, 1987
December 17, 1987
July 19, 1988
Aug. 23, 1988
Febr. 16, 1989
May 24, 1989