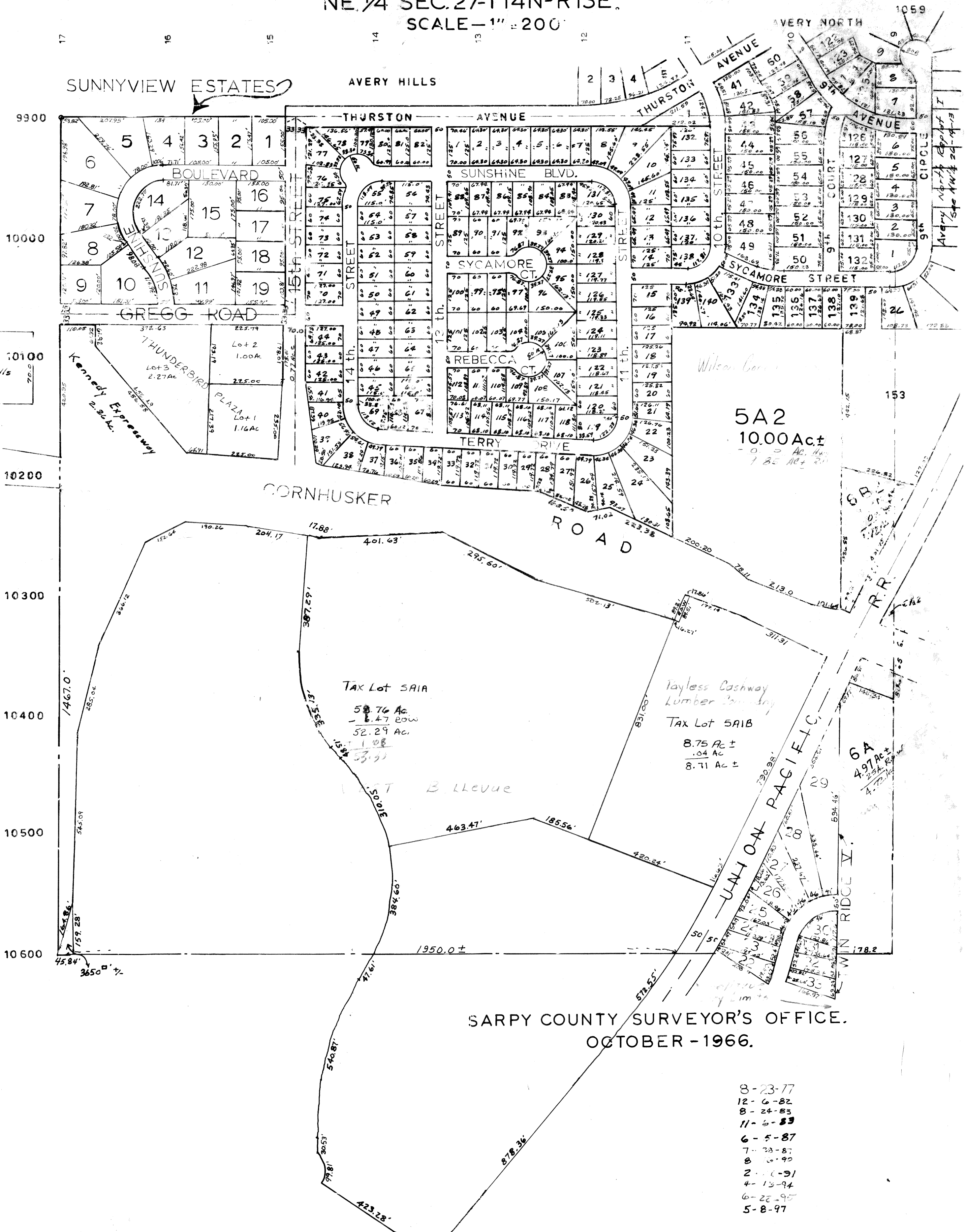


NE 1/4 SEC. 27-T14N-R13E.
SCALE - 1" = 200'



SARPY COUNTY SURVEYOR'S OFFICE.
OCTOBER - 1966.

- 8-23-77
- 12-6-82
- 8-24-85
- 11-6-83
- 6-5-87
- 7-28-87
- 8-6-90
- 2-1-91
- 4-13-94
- 6-22-95
- 5-8-97