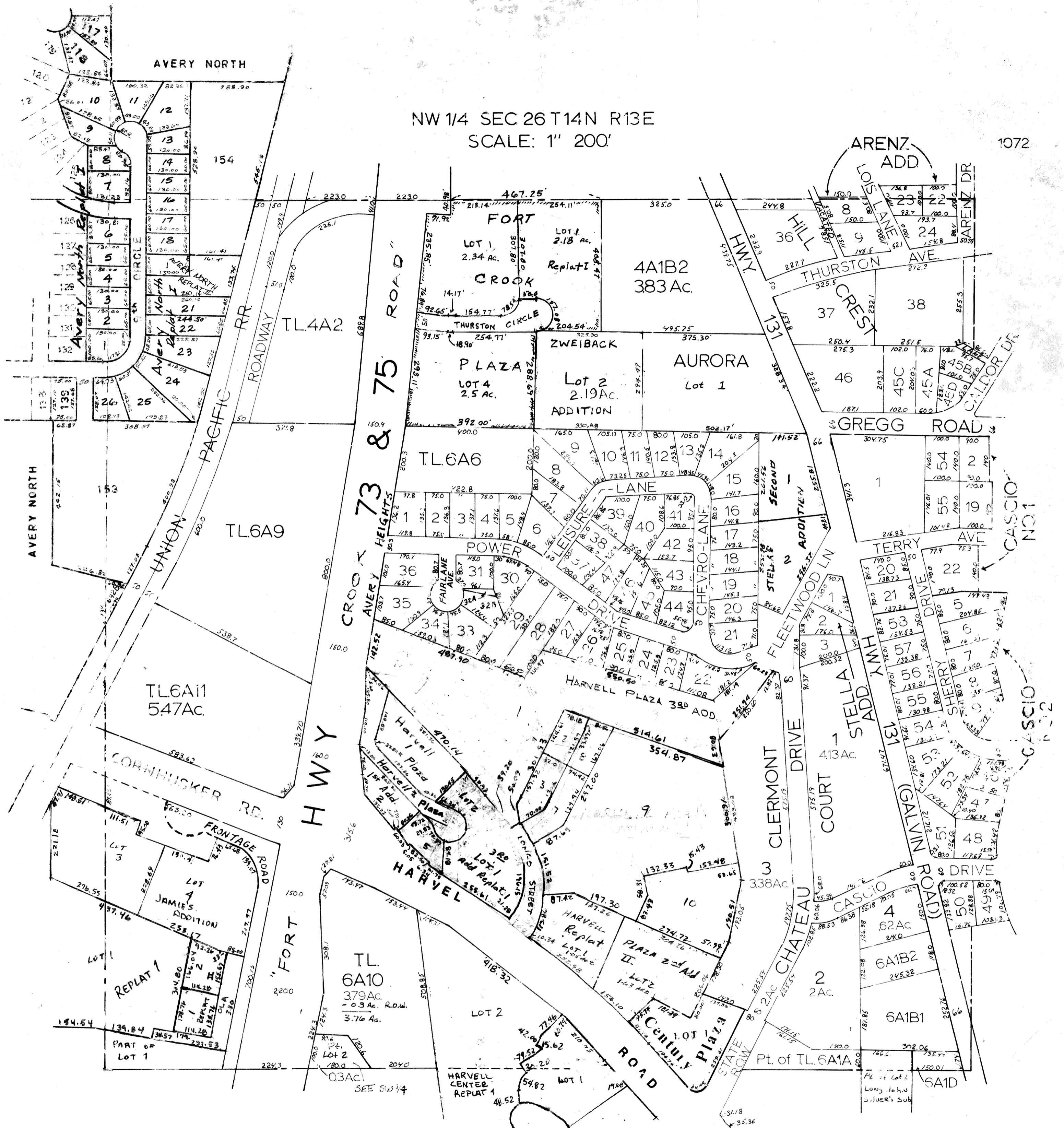


NW 1/4 SEC 26 T14N R13E  
SCALE: 1" 200'

1072



SARPY COUNTY SURVEYOR'S OFFICE  
AUGUST 1961

TAX LOT 14: T.L.'S 5, 6A2A, 7.32 AC.

REVISED	
9-26-96-018001	10-30-64
12-27-60-PLAT	11-05-64
8-16-01-PLAT	10-10-66
01-28-02-PLAT	6-14-72
03-05-03-PLAT	3-16-77
02-01-04-PLAT	12-18-78
07-27-05-PLAT	7-17-79
10-07-05-PLAT	8-2-80
8/28/81	10-23-91
12/6/82	1-29-93
4-12-87	8-11-94
8-27-87	4-10-95
8-20-90	7-15-96 Plat
8-23-90	1-3-97 Plat
10-18-90	9-25-98 Plat
2-26-91	9-27-98 Plat
8-10-91	11-15-00 Plat