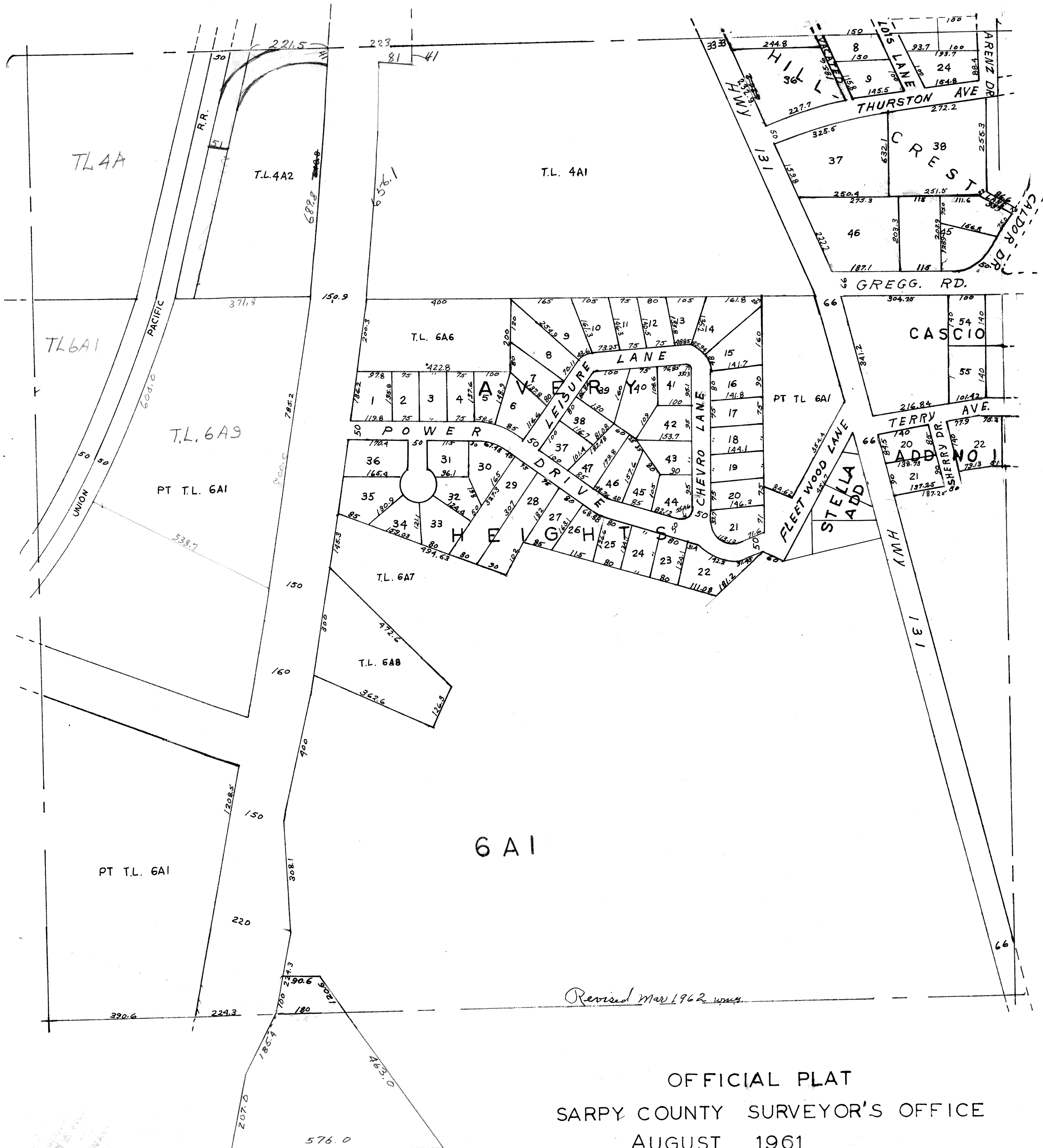


NW 1/4-SEC. 26-T14N-R13E



Revised Mar 1962

OFFICIAL PLAT  
SARPY COUNTY SURVEYOR'S OFFICE  
AUGUST 1961

F. I. W. - N. P. W.

RECORDED IN  
SARPY COUNTY  
PLAT BOOK NO. 11  
PAGE 11