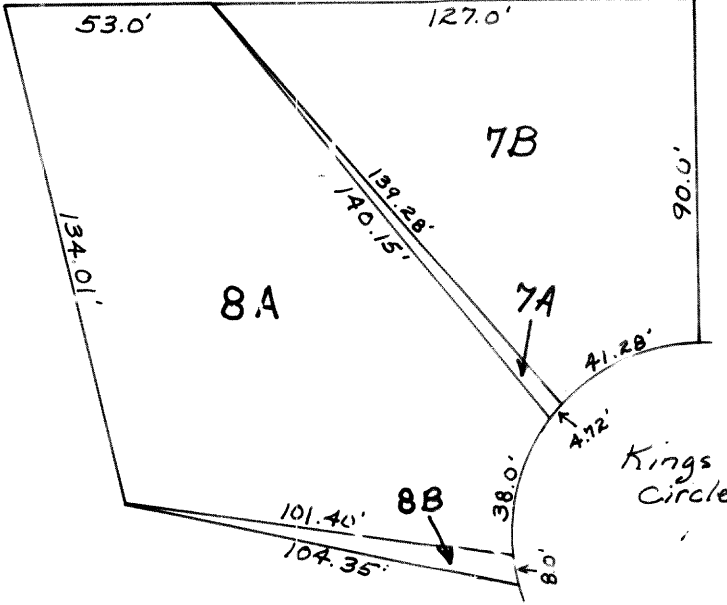


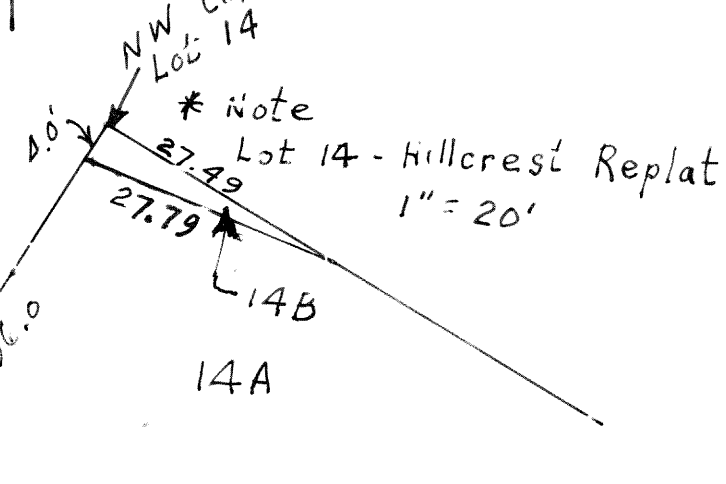
SCALE - 1" = 200'



* Note:
Lots 7 & 8 Hillcrest Replat
1" = 50'



SARPY COUNTY SURVEYOR'S OFFICE
Revised - JUNE - 1965



- 10-23-70
- 11-4-70
- 8-13-72
- 7-18-80
- 3-27-84
- 3-5-85
- 11-7-85
- 9-12-86
- 8-6-87
- 4-3-88
- 2-6-89
- 8-8-89
- 9-28-89
- 12-15-89
- 12-30-97
- 1-20-04-PLAT
- 2-21-05-PLAT
- 9-23-04-PLAT