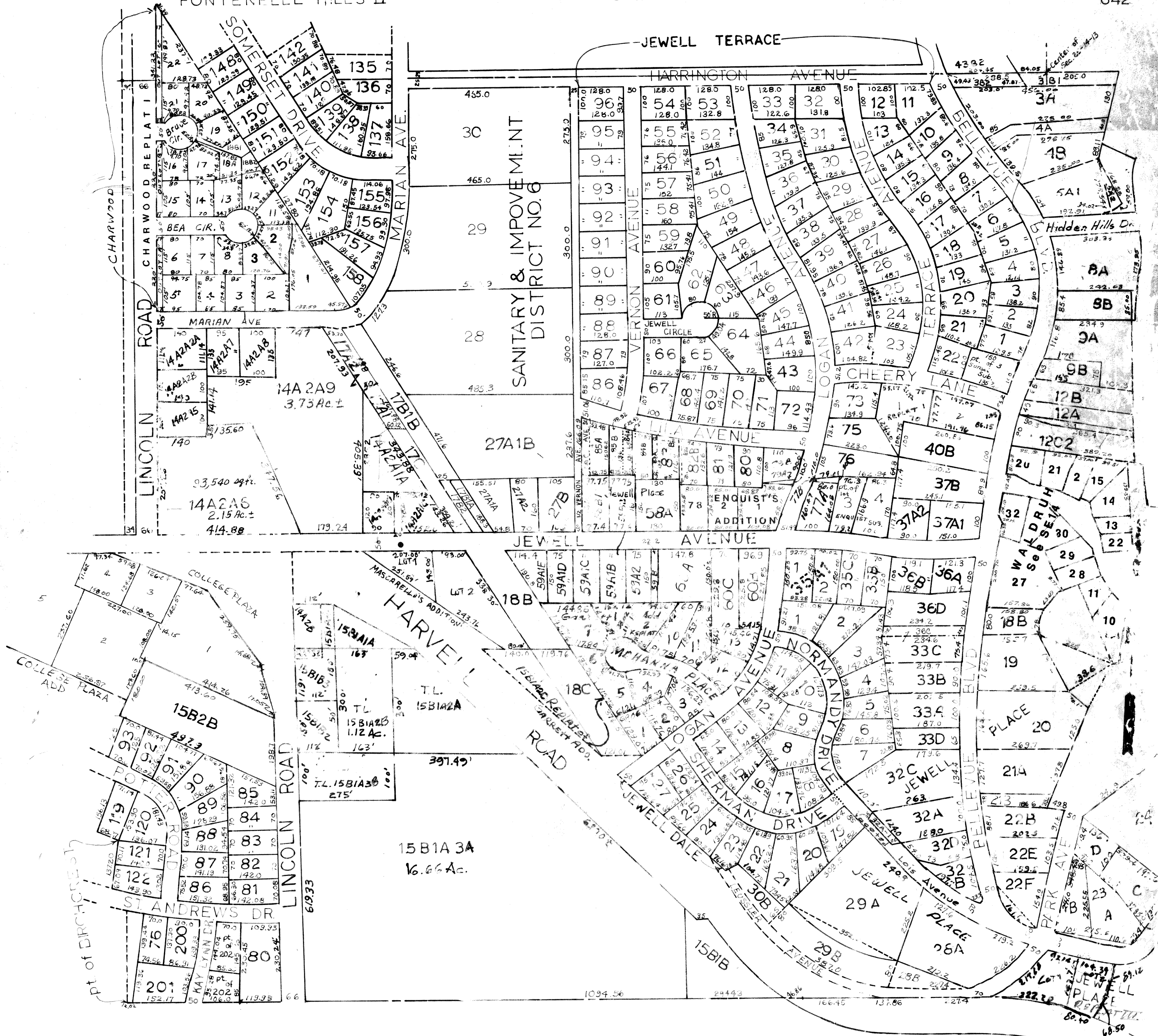


FONTENELLE HILLS II



REPLAT OF LOT 35A1 JEWELL PLACE,
LOCATED AT JEWELL AVE. AND LOGAN AVE.

SARF COUNTY SURVEYOR'S OFFICE
AUGUST 1961

10-09-03-Plat-20-90 6/29/81 12-22-71
5-16-06-PLAT 10-17-90 9/21/83 3-4-74
4-23-82 6-12-86 6-25-74
10-16-96-Plat 4-22-88 8-15-79