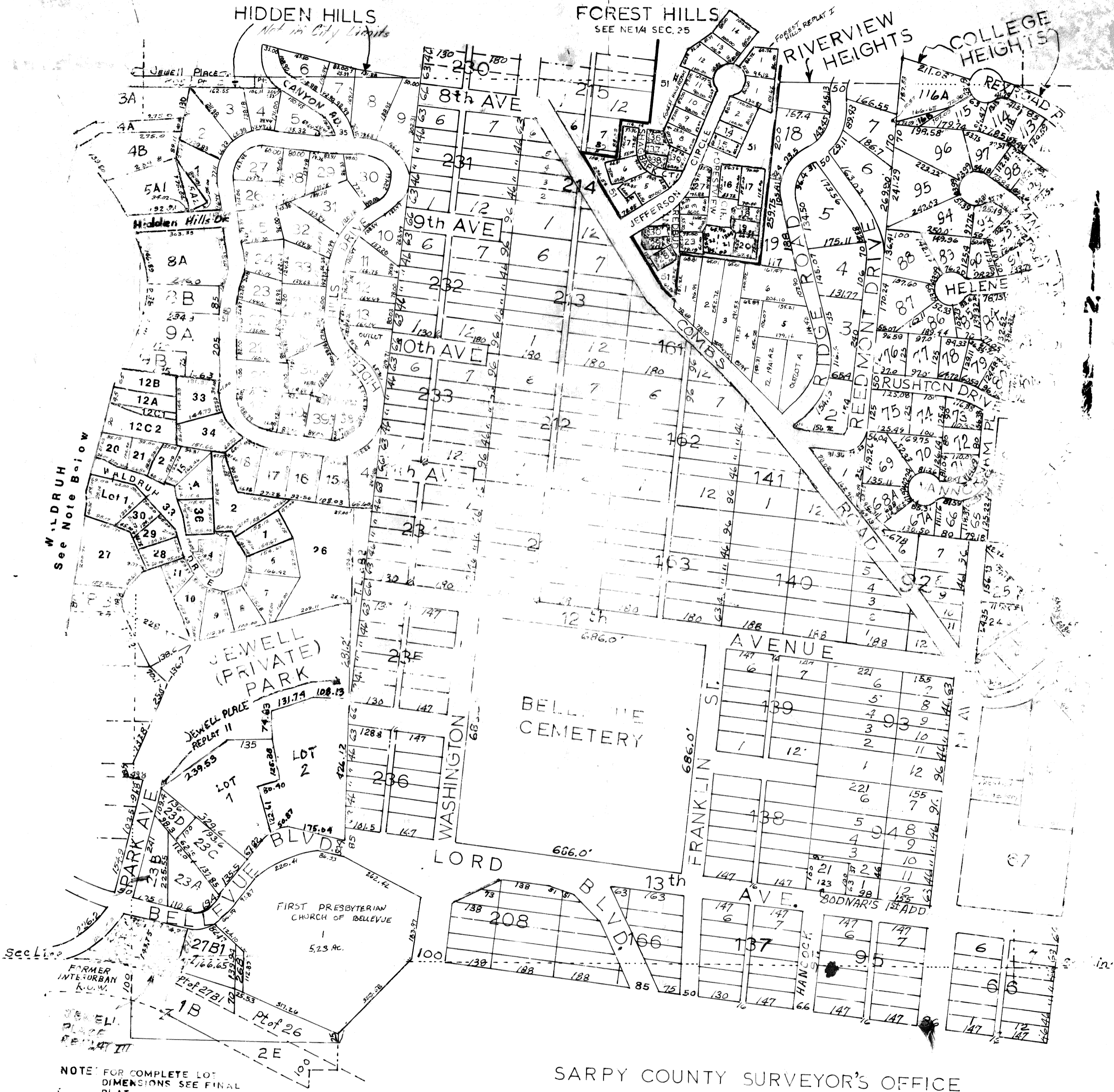


SE 1/4 SEC. 25-T14N-R13E.  
SCALE - 1"=200'



SARPY COUNTY SURVEYOR'S OFFICE  
APRIL -- 1963

- NOTE: FOR COMPLETE LOT DIMENSIONS SEE FINAL PLAT.
- WALDRUH REPLAT NO. 1
  - WALDRUH REPLAT NO. 2
  - WALDRUH REPLAT NO. 3
  - WALDRUH REPLAT NO. 4
  - WALDRUH REPLAT NO. 5
  - WALDRUH REPLAT NO. 6

10-09-03-Plat		Revised
5-15-89	7-10-87	
8-03-04-31268	6-25-89	
	10-13-70	
	10-13-73	
	10-13-77	
	10-13-80	
	10-13-83	
	10-13-86	
	10-13-89	
	10-13-92	
	10-13-95	
	10-13-98	
	10-13-01	
	10-13-04	
	10-13-07	
	10-13-10	
	10-13-13	
	10-13-16	
	10-13-19	
	10-13-22	
	10-13-25	
	10-13-28	
	10-13-31	
	10-13-34	
	10-13-37	
	10-13-40	
	10-13-43	
	10-13-46	
	10-13-49	
	10-13-52	
	10-13-55	
	10-13-58	
	10-13-61	
	10-13-64	
	10-13-67	
	10-13-70	
	10-13-73	
	10-13-76	
	10-13-79	
	10-13-82	
	10-13-85	
	10-13-88	
	10-13-91	
	10-13-94	
	10-13-97	
	10-13-00	