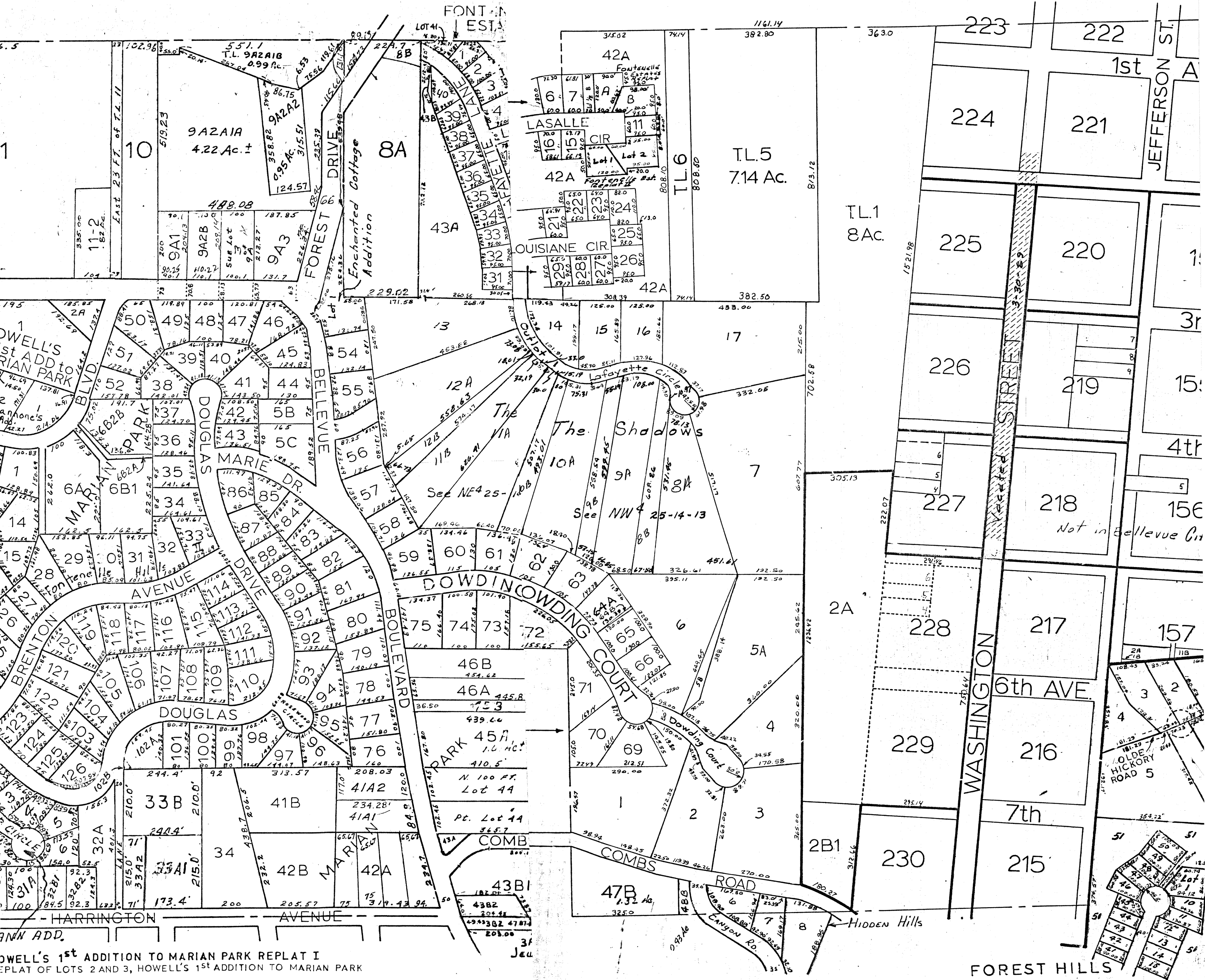


NW 1/4 SEC 25-T14N-R13E

SCALE: 1" = 200'

NE 1/4 SEC 25-T14N-R13E  
SCALE: 1" = 200'



SARPY COUNTY SURVEYOR  
MAY 1969

Forest Hills Replat No. 1  
Lot 1, Being a Replat of Lots 8 and 9

SARPY COUNTY SURVEYOR  
APRIL 1969