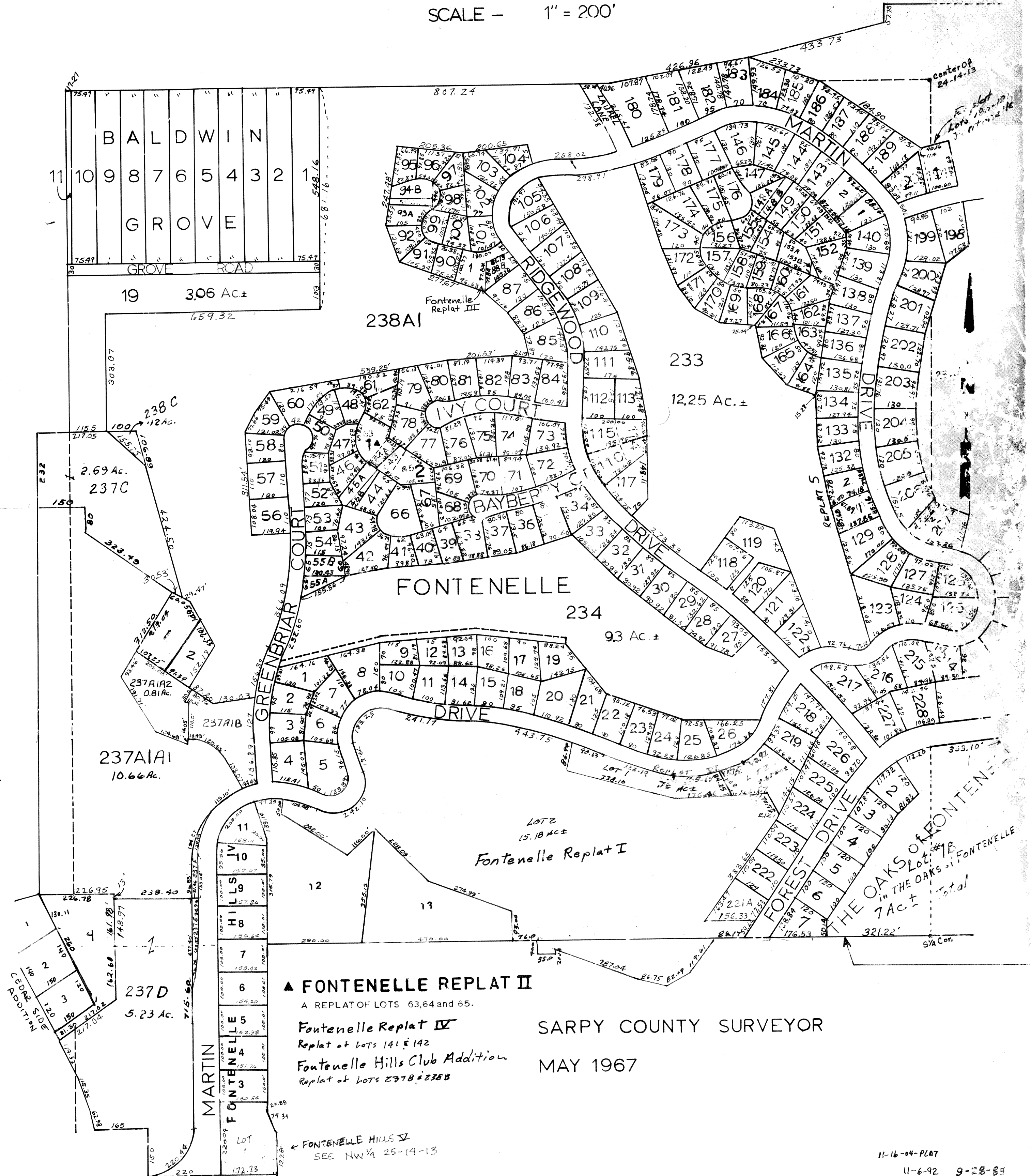


SCALE - 1" = 200'



▲ FONTENELLE REPLAT II

A REPLAT OF LOTS 63,64 and 65.

Fontenelle Replat IV

Replat of lots 141 & 142

Fontenelle Hills Club Addition

Replat of lots 237B & 238B

SARPY COUNTY SURVEYOR

MAY 1967

11-16-04-PLAT

11-6-92 9-28-85

8-14-95 Plat 9-22-86

1-06-99 2 PLATS 5-1-85

01-08-01-3441-492 3-28-74

2-24-04-01618 1-1-75=55A

6-08-04-PLAT 1-9-77

7-24-04-PLAT 7-5-78