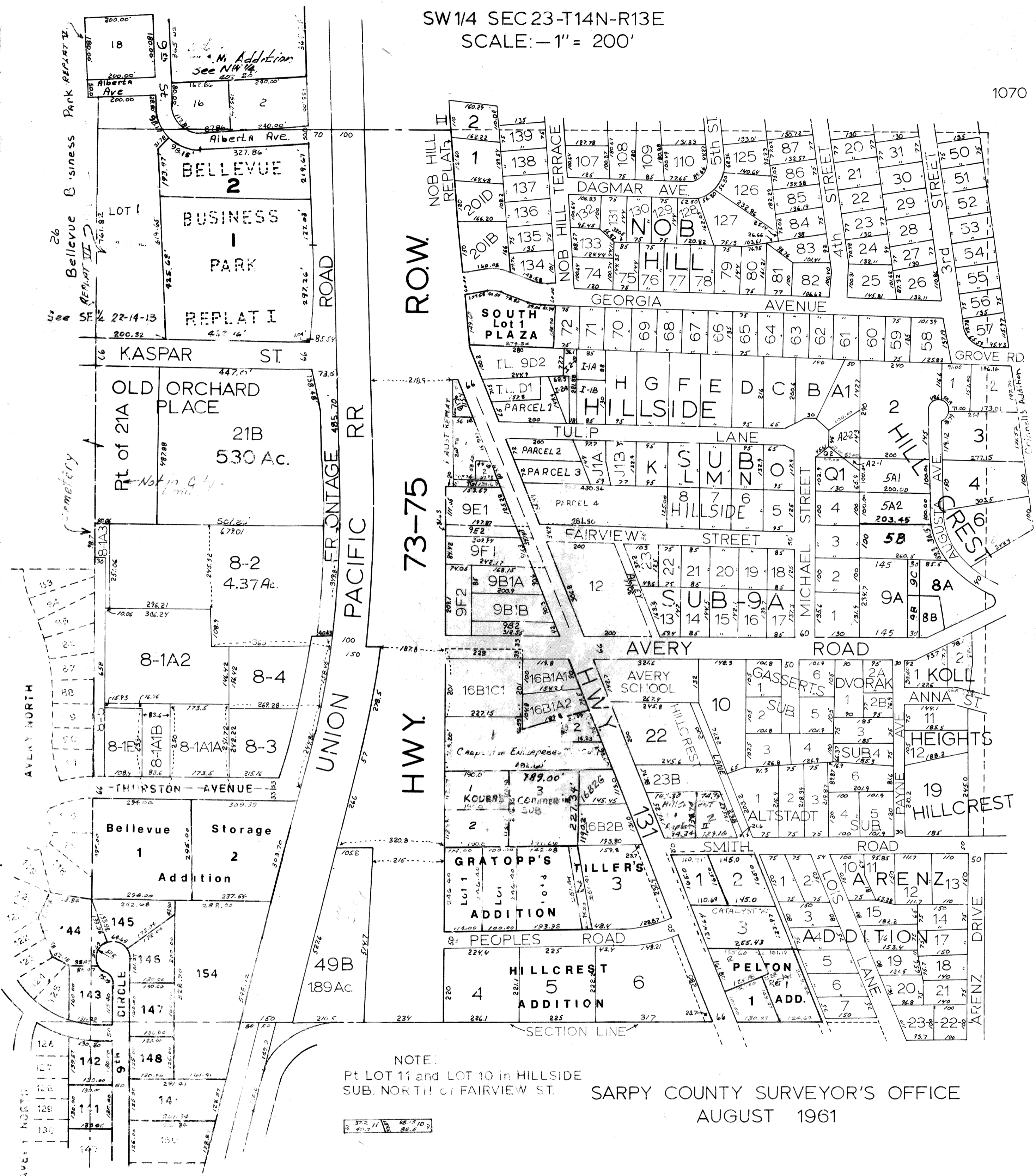


SW 1/4 SEC 23-T14N-R13E
SCALE: -1" = 200'

1070



NOTE:
Pt LOT 11 and LOT 10 in HILLSIDE
SUB. NORTH of FAIRVIEW ST.

SARPY COUNTY SURVEYOR'S OFFICE
AUGUST 1961

REVISED		
05-15-01-Plat	10-20-65	9-19-88
	3-04-74	10-11-88
	5-09-77	10-27-89
	8-11-78	12-15-89
	1-9-79	8-27-90
	3-13-79	7-7-92
	12-6-82	8-18-92
	11-4-83	10-20-92
	4-11-85	1-12-93
	6-11-87	2-5-93
	8-10-90	11-93