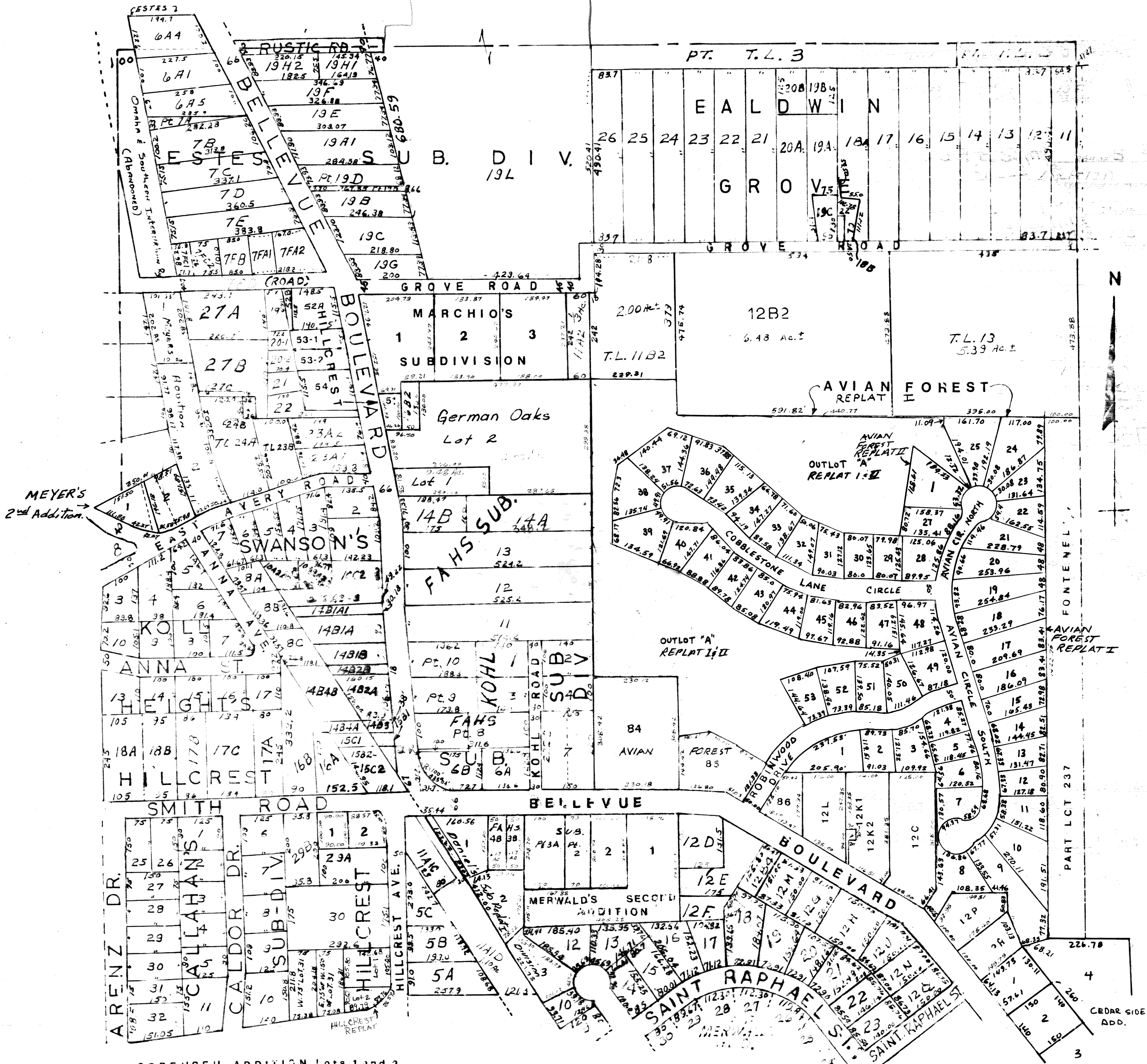


SE1/4 SEC.23-T14N-R13E

SCALE - 1" = 200'

1069



SOREISEN ADDITION Lots 1 and 2
Replat of Lot 29C Hillcrest Subdivision

SARRE COUNTY SURVEYOR'S OFFICE

MARCH 1980
REVISED
MAY 16, 1978
Nov. 28, 1979
Dec. 4, 1986
May 5, 1988
May 24, 1988
Oct. 14, 1988
May 24, 1990
Dec. 20, 1990
Nov. 5, 1991
JAN. 8, 1997
11-05-97 Plat
04-18-99 Plat
04-24-00-05253/08254
02-15-02-PLAT
07-20-02-Plat
11-16-04-PLAT