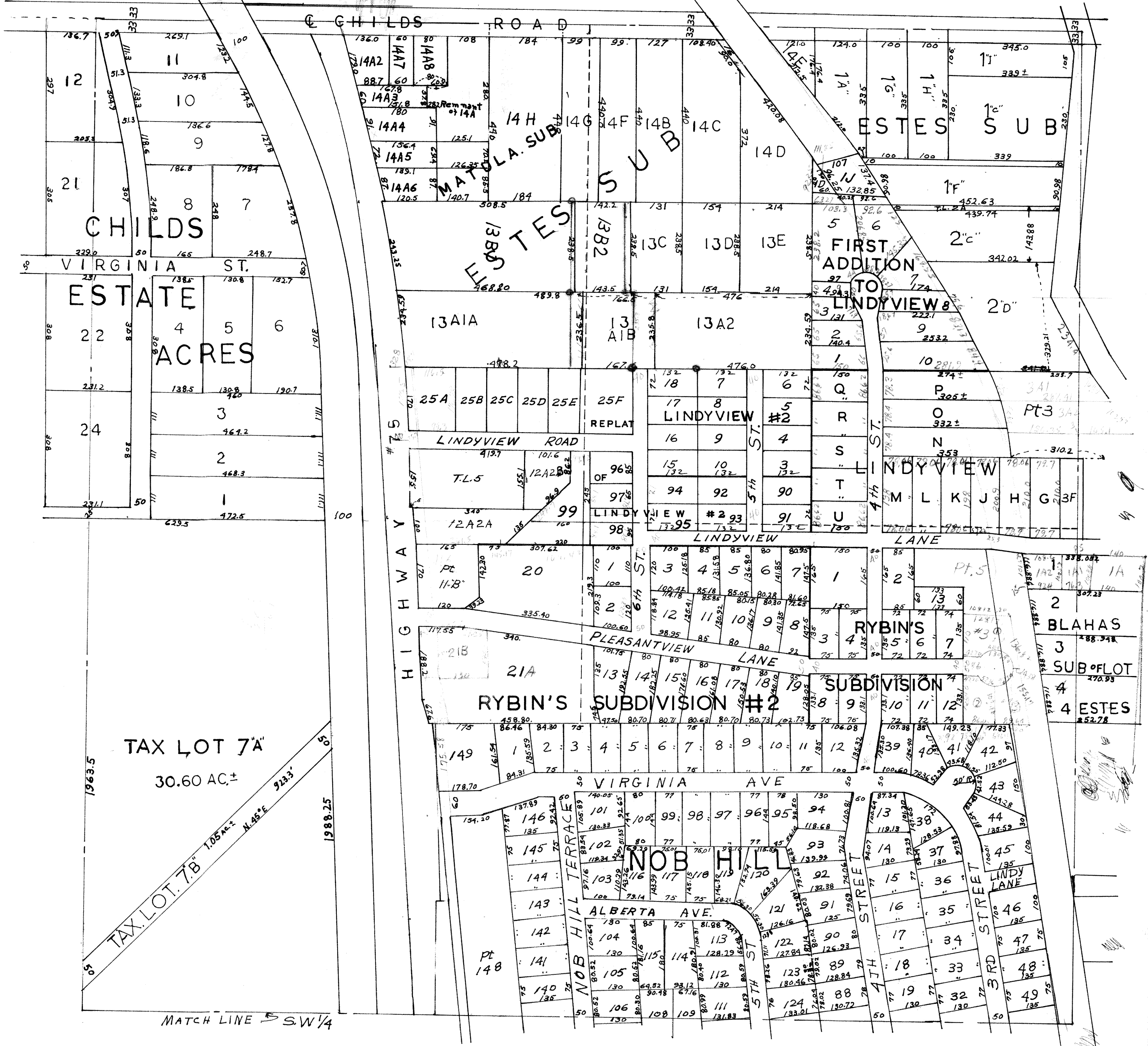


N.W. 1/4 - SEC 23 - T14N - R13E

1" = 200'



OFFICIAL PLAT  
 SАРY COUNTY SURVEYOR'S OFFICE  
 JUNE 1961  
 F. I. W. - N. P. W.

*[Handwritten signatures and notes at the bottom of the page, including 'J t' and various scribbles.]*