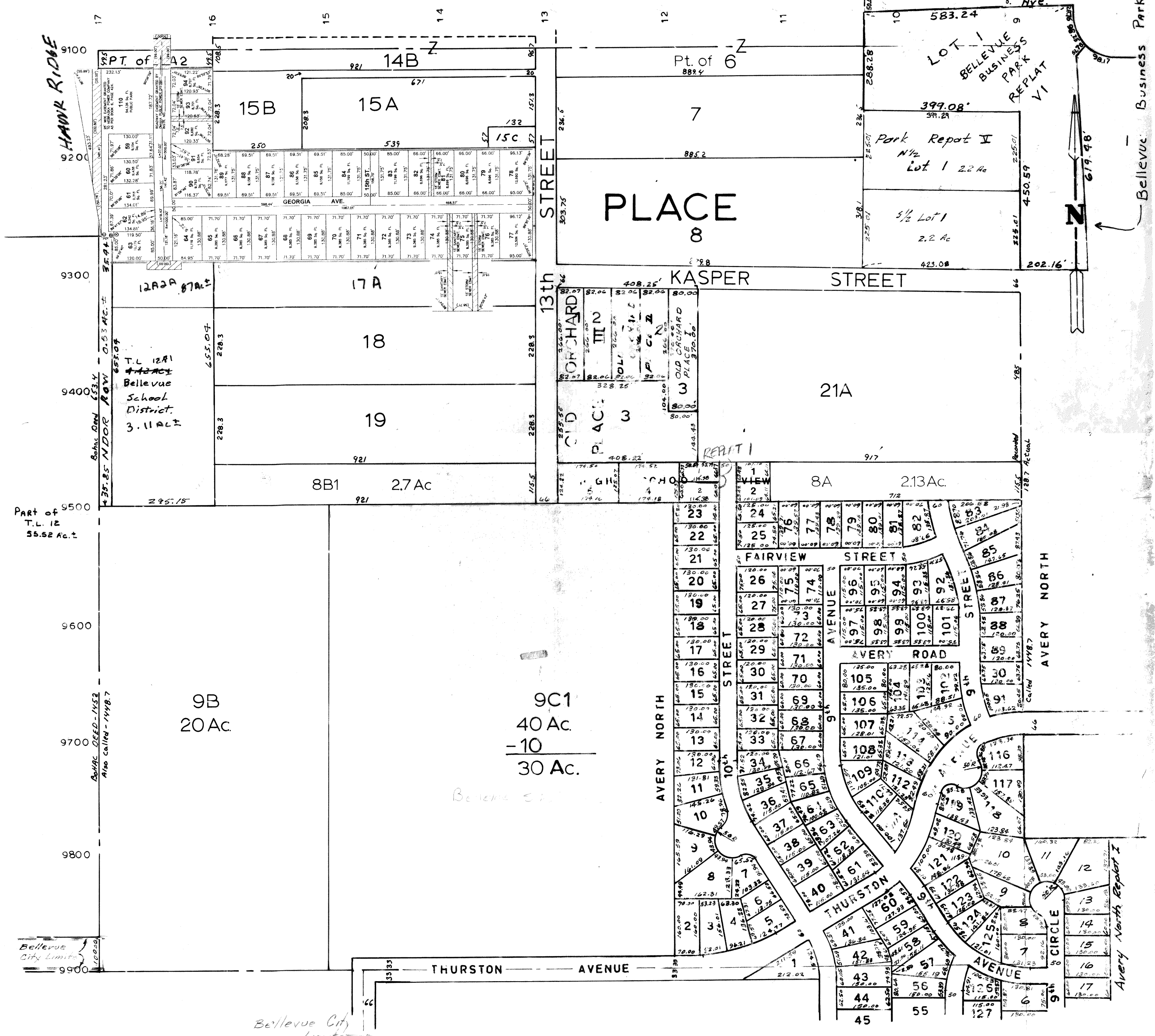


SE 1/4 SEC 22-T14N-R13E.
SCALE: -1" = 200'



SARPY COUNTY SURVEYOR'S OFFICE
JANUARY 1967

- Revised
- 1/9/79 5+5-90
 - 6/7/83 12-30-91
 - 2-12-85 7-6-92
 - 2-6-86 6-29-94
 - 9-16-86 12-11-96
 - 6-10-87 9-27-04-TL
 - 2-26-91 9-07-05-24609