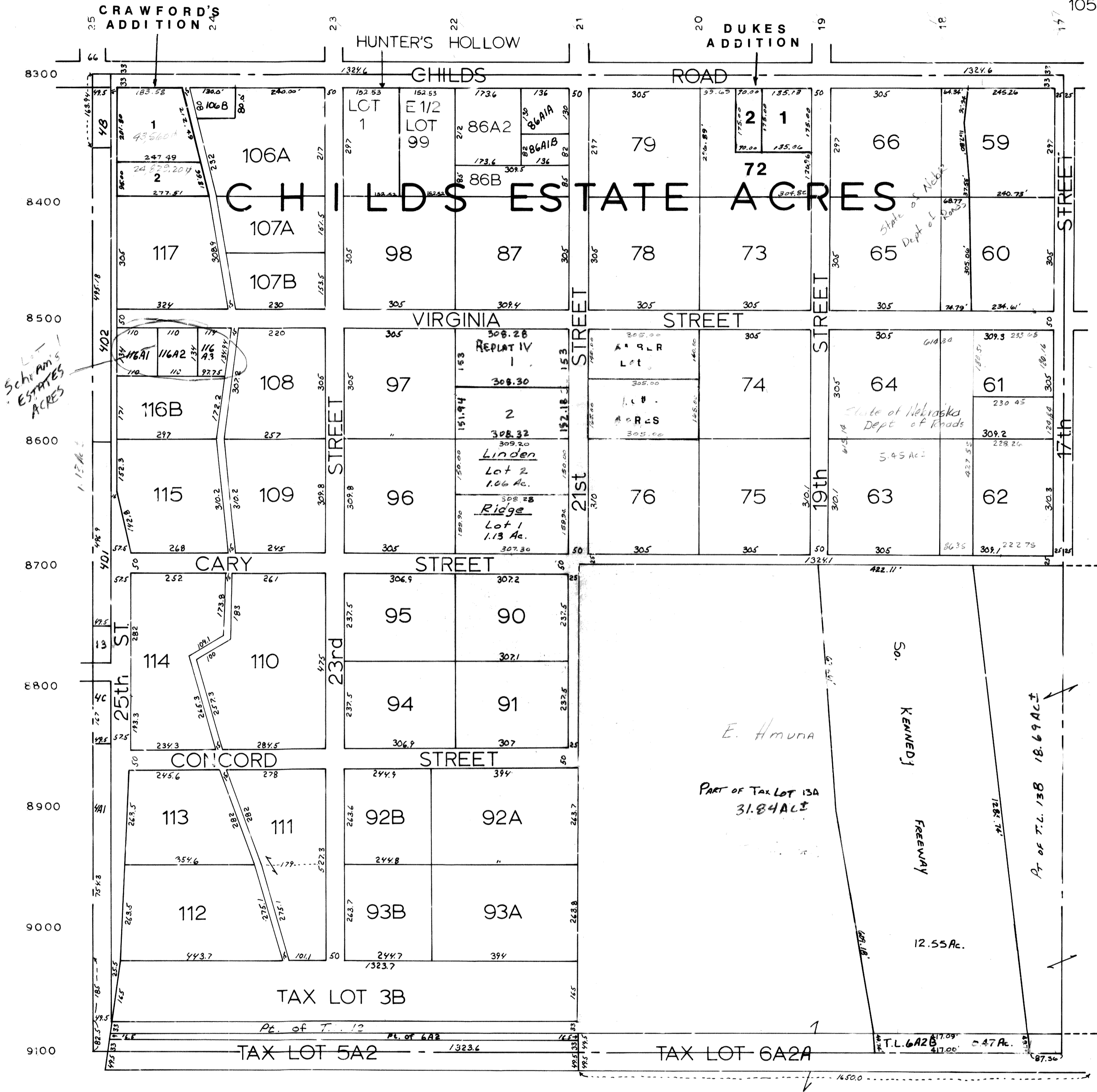


NW 1/4 SEC 22-T14N-R13E  
SCALE: -1" = 200'

1056



SARPY COUNTY SURVEYOR'S OFFICE  
FEBRUARY 1961

- REVISED
- 6-13-77
  - 7-15-87
  - 4-14-89
  - 4-24-89
  - 11-13-90
  - 9-10-91
  - 9-27-04 - T.L.
  - 5-16-04 - PLAT