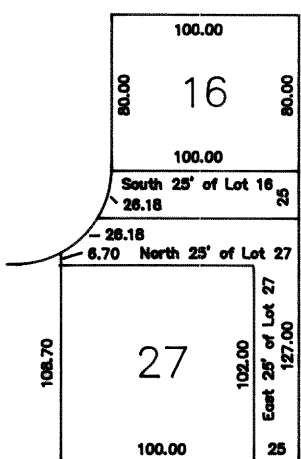
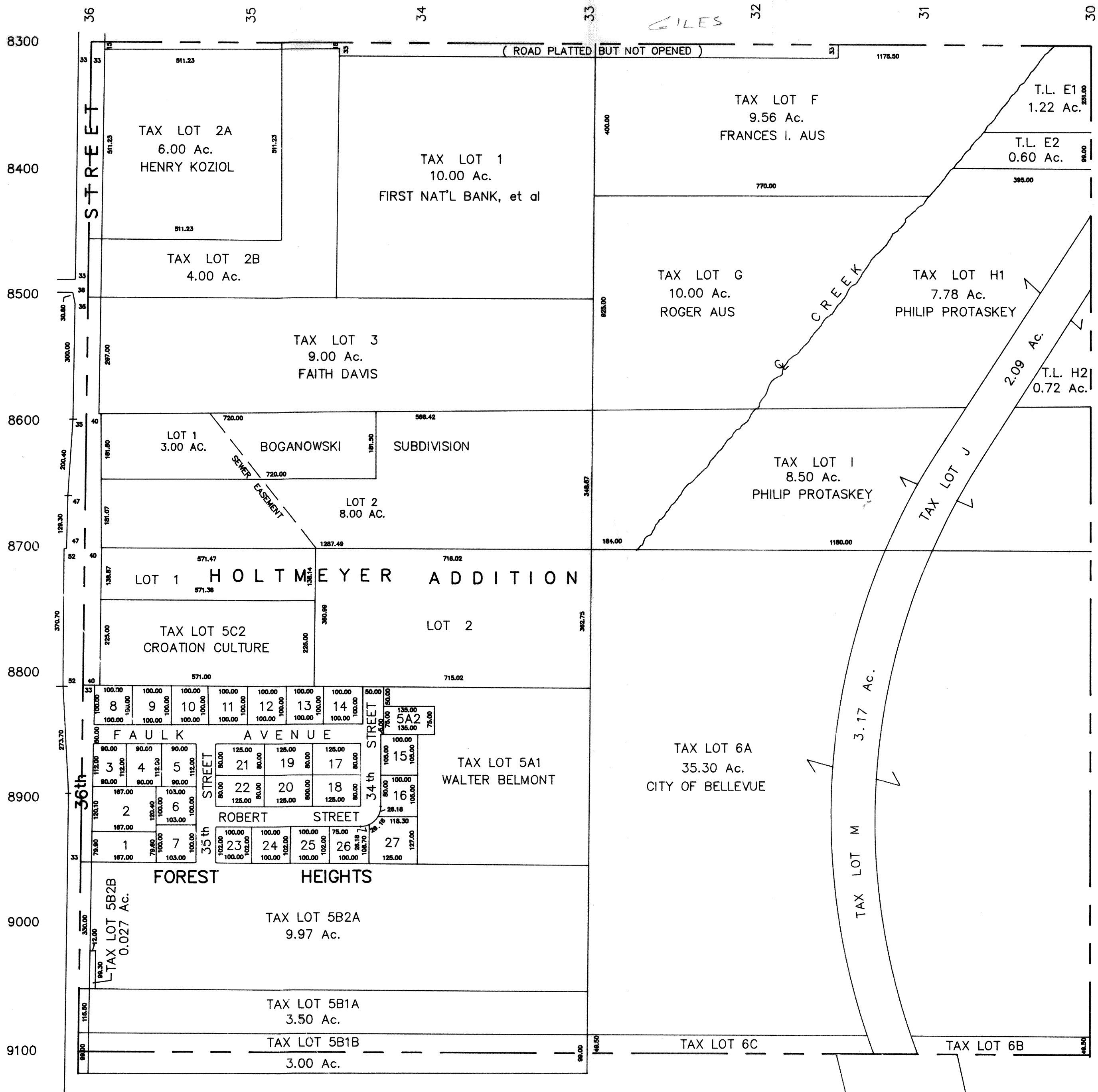


NW1/4 SEC. 21 T14N-R13E

SCALE 1" = 200'

SARPY COUNTY SURVEYOR

1044



LOTS 16 and 27, FOREST HEIGHTS

SARPY COUNTY SURVEYOR  
OCTOBER 1959

REVISED

SEPTEMBER	1961
JANUARY	1980
APRIL	1989
MAY	1993