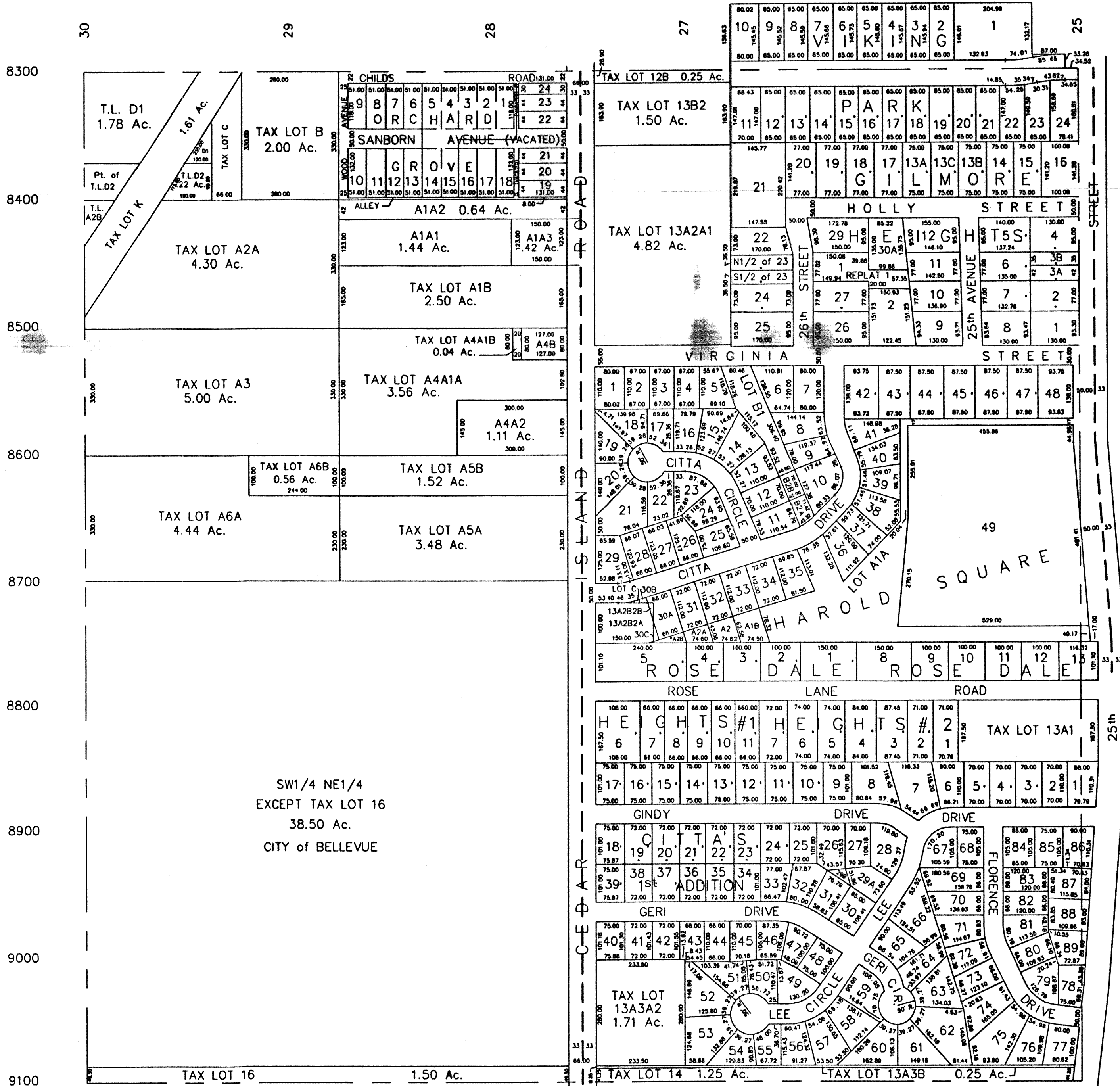
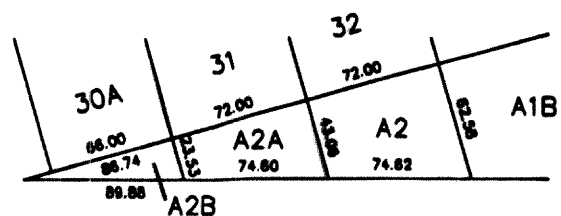


NE1/4 SEC. 21-T14N-R13E
SCALE 1" = 200'

1043



HAROLD SQUARE
• LOTS A2, A2A and A2B



SARPY COUNTY
SURVEYOR'S OFFICE

REVIONS

- 6-17-61
- 5- 1-72
- 5-11-77
- 1-18-78
- 4-10-80
- 8-19-80
- 9-23-81
- 9-20-85
- 9-10-87
- 7-22-91
- 9- 3-91
- 12-30-91
- 05-15-03-PLAT
- 10-25-04-LCON