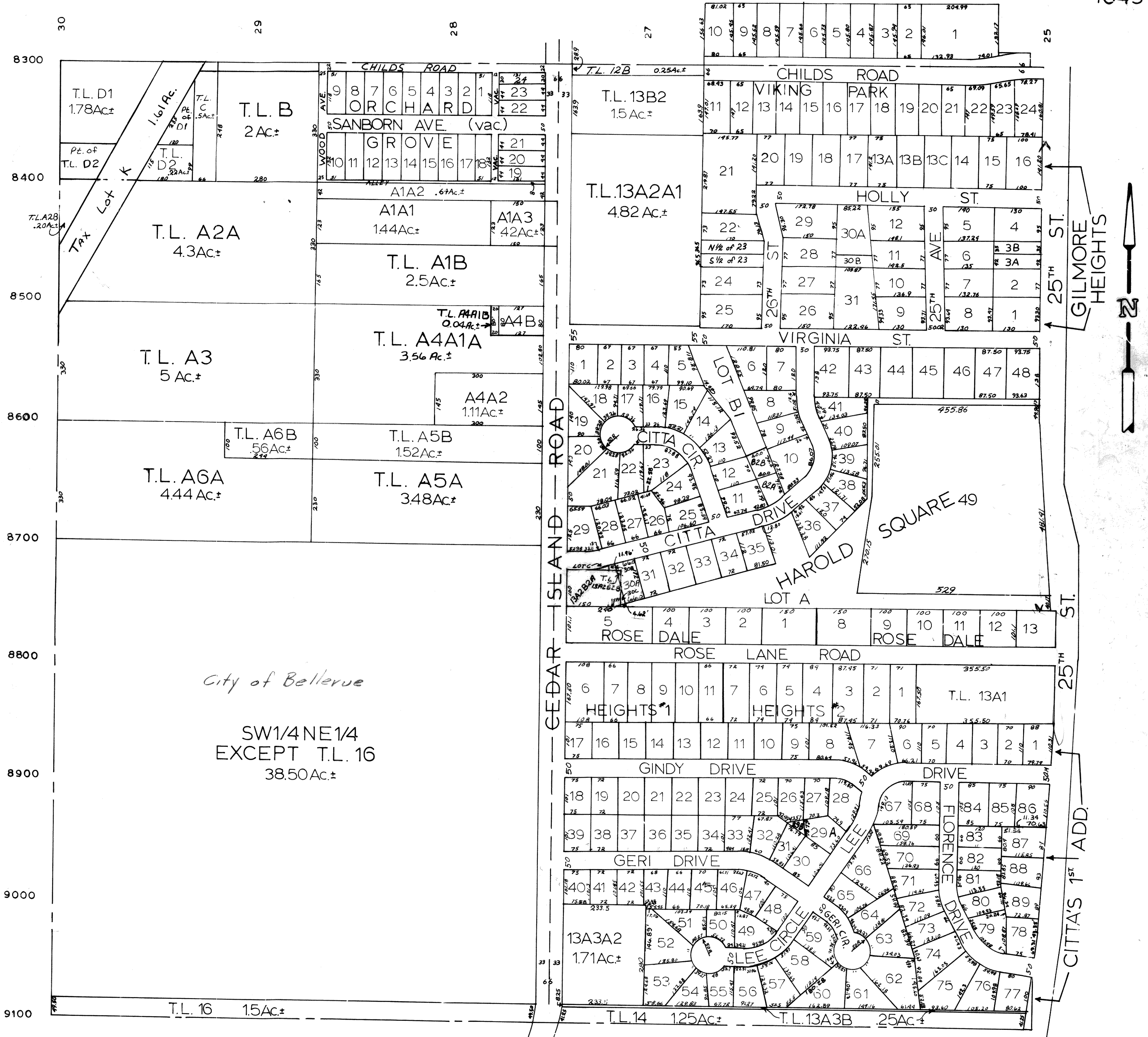


RONALD A RYSTROM  
SARPY COUNTY SURVEYOR

NE 1/4 SEC. 21 T14N-R13E  
SCALE: 1" = 200'

1043



City of Bellevue

SW 1/4 NE 1/4  
EXCEPT T.L. 16  
38.50 Ac±

SARPY COUNTY SURVEYOR'S OFFICE  
SEPTEMBER 1959

- REVISED
- 6 - 17 - 61
  - 5 - 1 - 72
  - 5 - 11 - 77
  - 1 - 18 - 78
  - 4 - 10 - 80
  - 8 - 19 - 80
  - 9 - 23 - 81
  - 9 - 20 - 85
  - 9 - 10 - 87