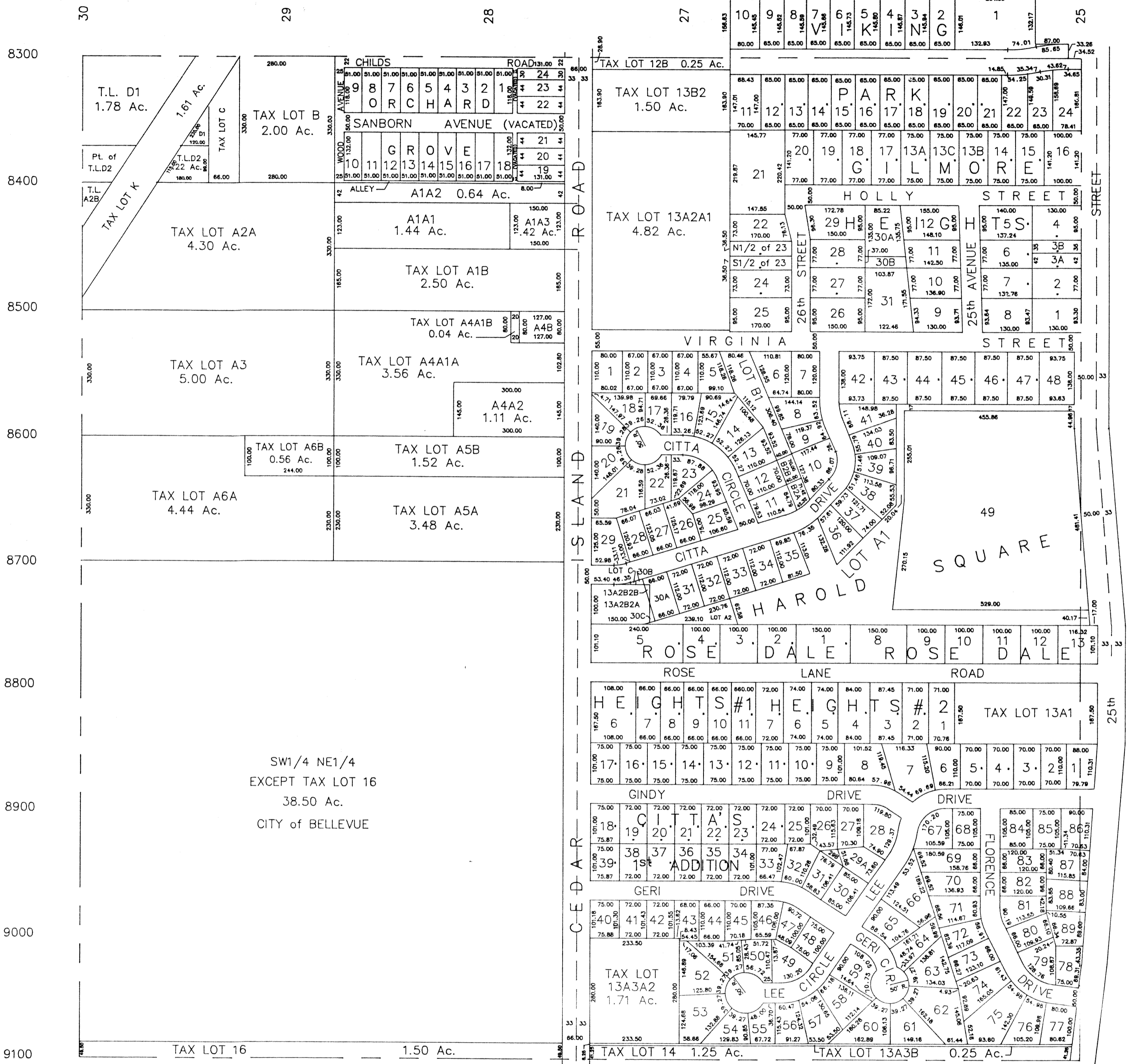


NE1/4 SEC. 21-T14N-R13E

SCALE 1" = 200'

RONALD A. RYSTROM
SARPY COUNTY SURVEYOR

1043



SARPY COUNTY SURVEYOR
SEPTEMBER 1959

REVISED

- 6-17-61
- 5- 1-72
- 5-11-77
- 1-18-78
- 4-10-80
- 8-19-80
- 9-23-81
- 9-20-85
- 9-10-87
- 7-22-91