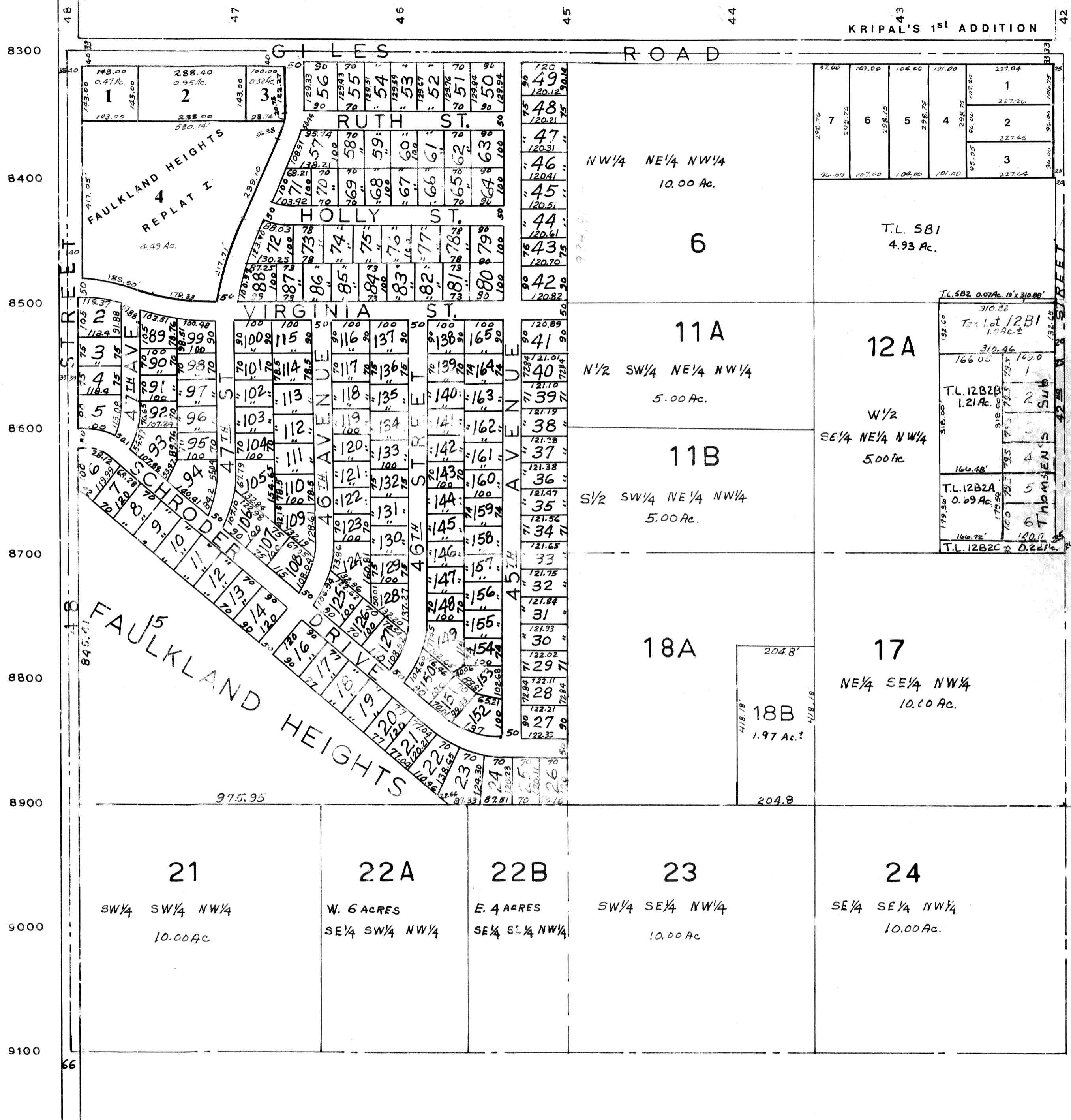


NW1/4 SEC 20 T14N R13E

RONALD A. RYSTROM  
SARPY COUNTY SURVEYOR

1032

SCALE: 1"=200'



SARPY COUNTY SURVEYOR'S OFFICE  
JULY 1961

9-20-88 11/4/86  
3/1/87  
11-17-87  
i-21-72  
11-23-64  
9-1-71