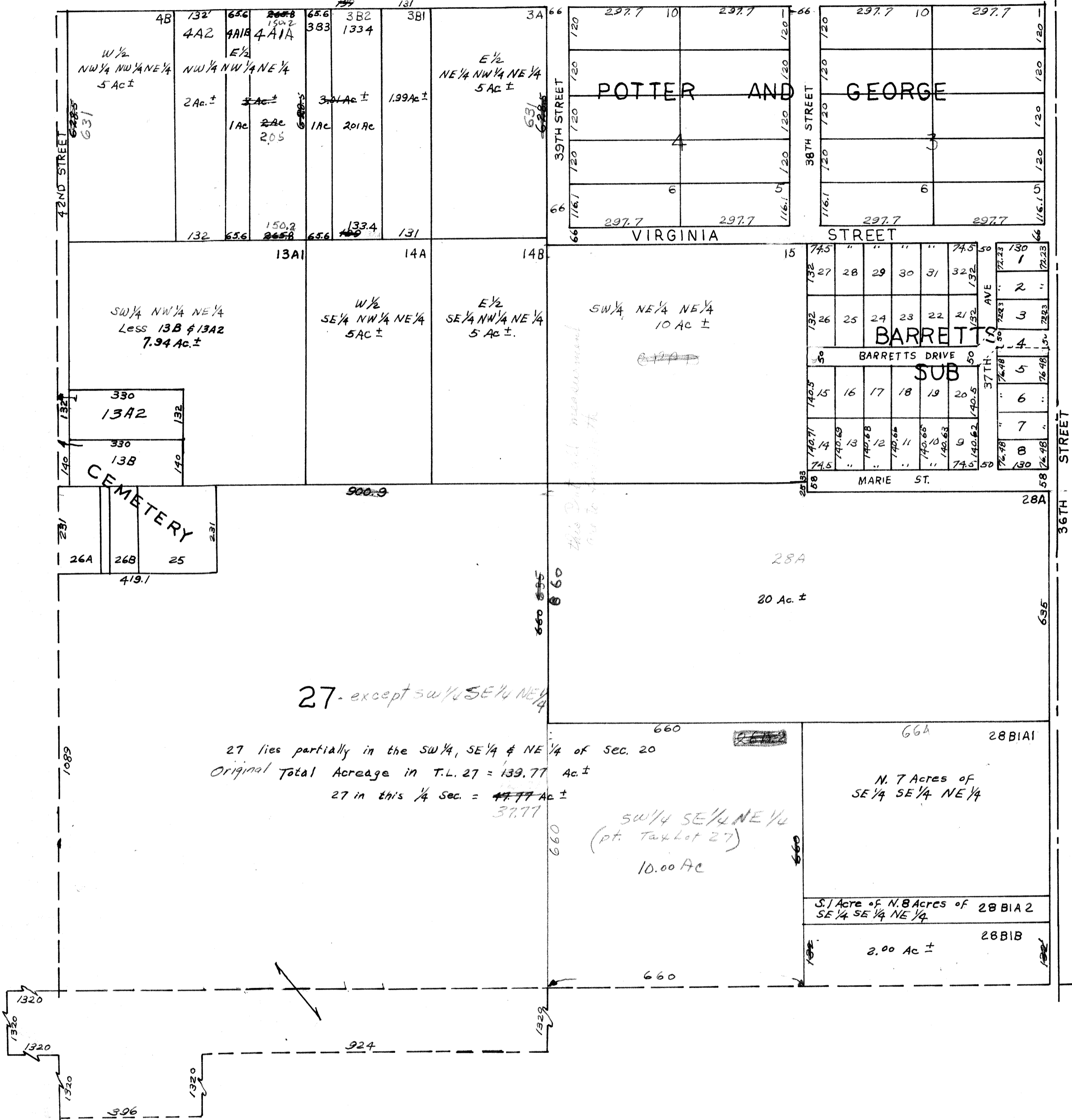


NE 1/4 SEC 20 T14N R13E
SCALE, 1" = 200 FT.

GILES ROAD



OFFICIAL - PLAT
Sarpy County - Surveyor's Office
December - 1957
F.I.W. - N.P.W.
Revised - May - 1961

Handwritten calculations:
4600 / 310.1 = 14.83
5100 / 310.1 = 16.45
6000 / 310.1 = 19.35

Handwritten calculations:
12.88 / 1.50 = 8.59
12.88 / 1.50 = 8.59
12.88 / 1.50 = 8.59