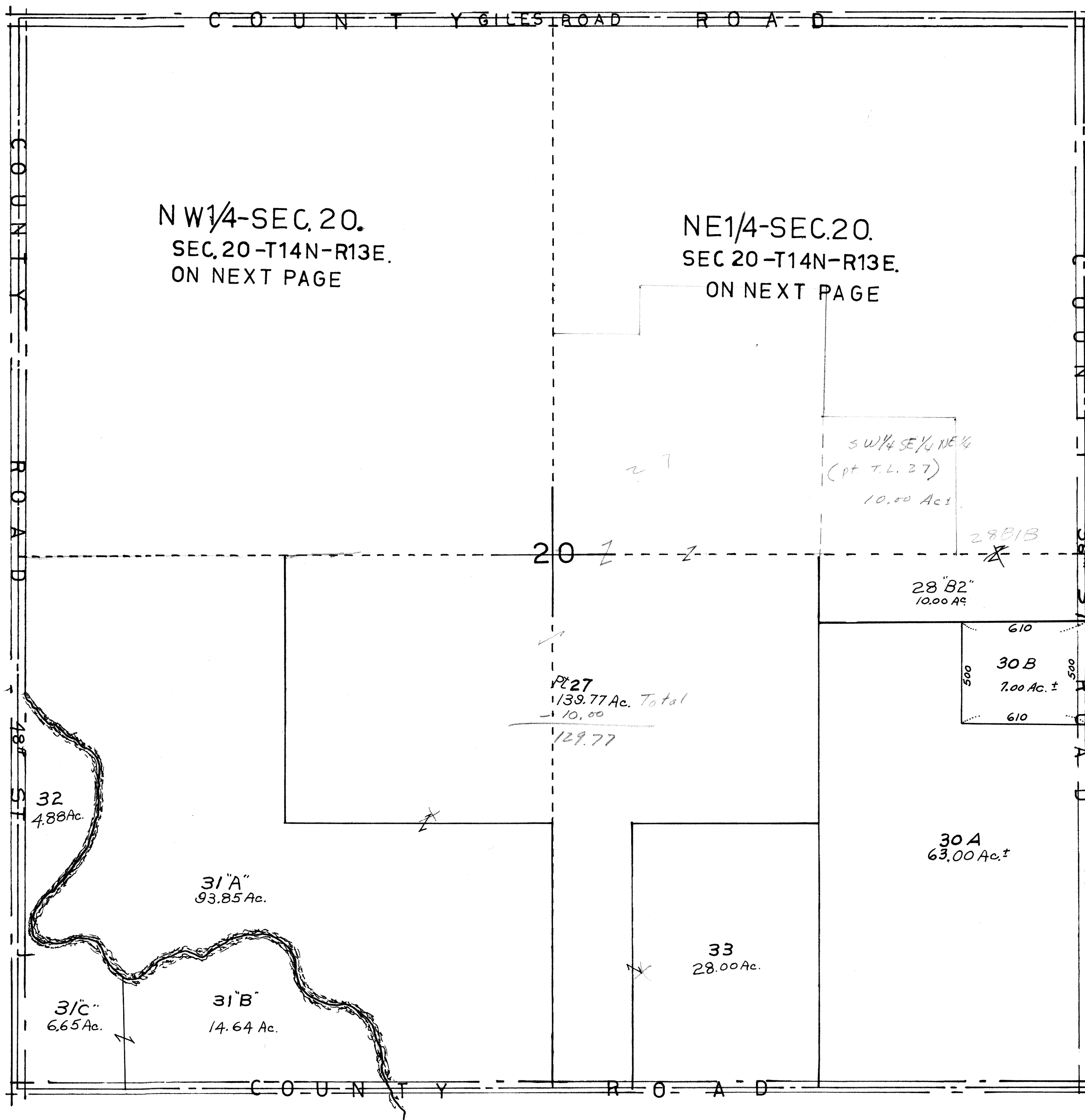


SE&SW<sup>1</sup>/<sub>4</sub>-SEC.20-T14N-R13E

SCALE --- 1: INCH = 400 FEET



OFFICIAL PLAT  
SARPY COUNTY SURVEYOR'S OFFICE  
OCTOBER 1961

F.I.W. - N.P.W.  
w.m.g.