

NE 1/4-SEC. 19-T14N-R13E

1" = 200'

Tax Lot 3B1B
6.61 AC. ±
In. Sec. 18-14-13

Tax Lot A2B
10.19 AC. ±

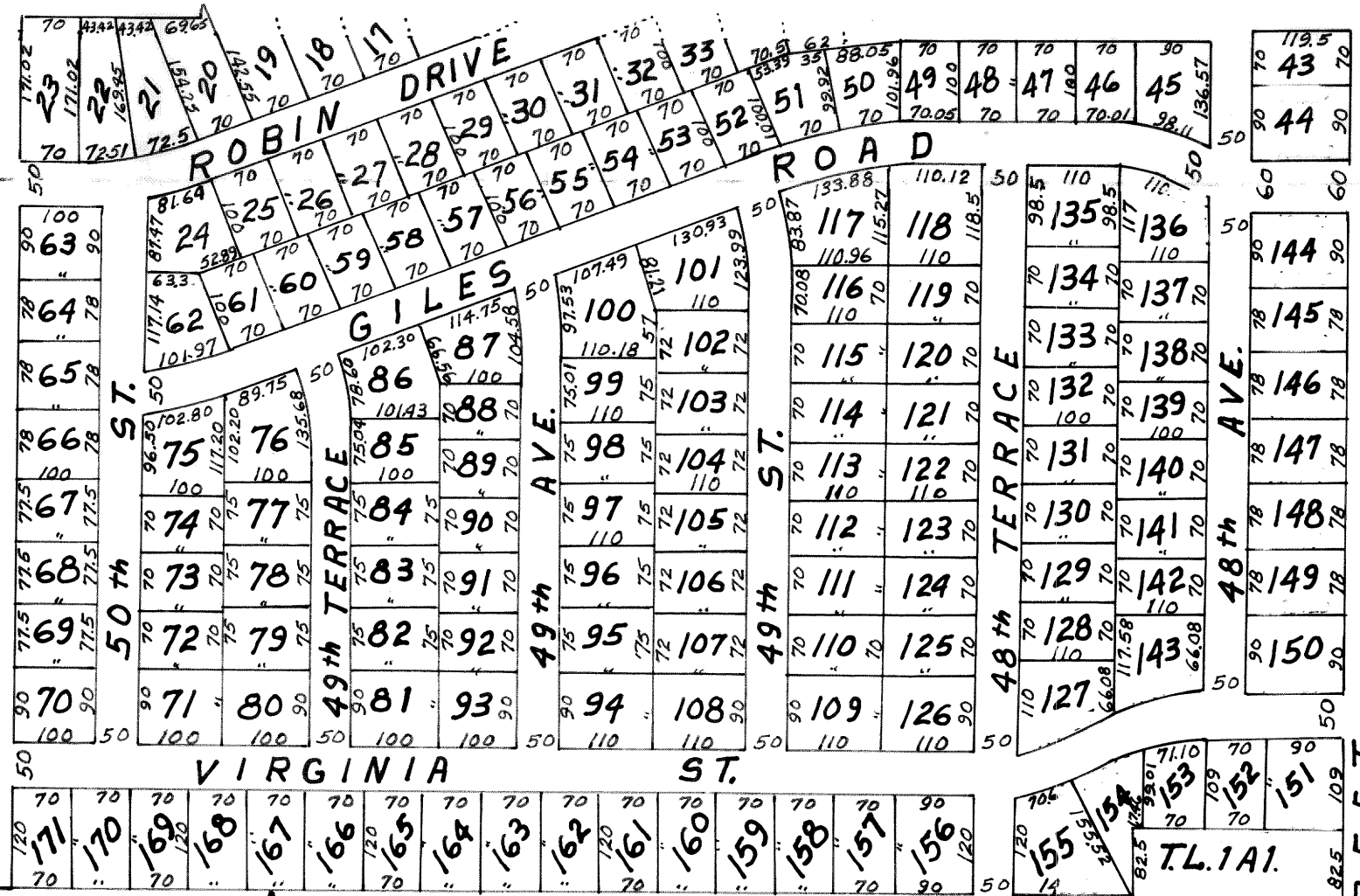
Pt Tax Lot 1A2A

Tax Lot 2
100.00 AC. ±
-16.07 in Tax Lot 4
83.93 AC. ±

Tax Lot 4
16.07 AC. ±

TO WHOM IT MAY CONCERN
DO NOT PRINT THIS
1/4 SECTION (YET)
W.M.G.

SARPY COUNTY MARCH 1966



SOUTH 48th STREET

Pt. Tax Lot 3
PAPILLION DRAINAGE DITCH

OLD PAPILLION GREEK

734.58'
443.96'
429.04'
858.75'
841.50'
441.96'