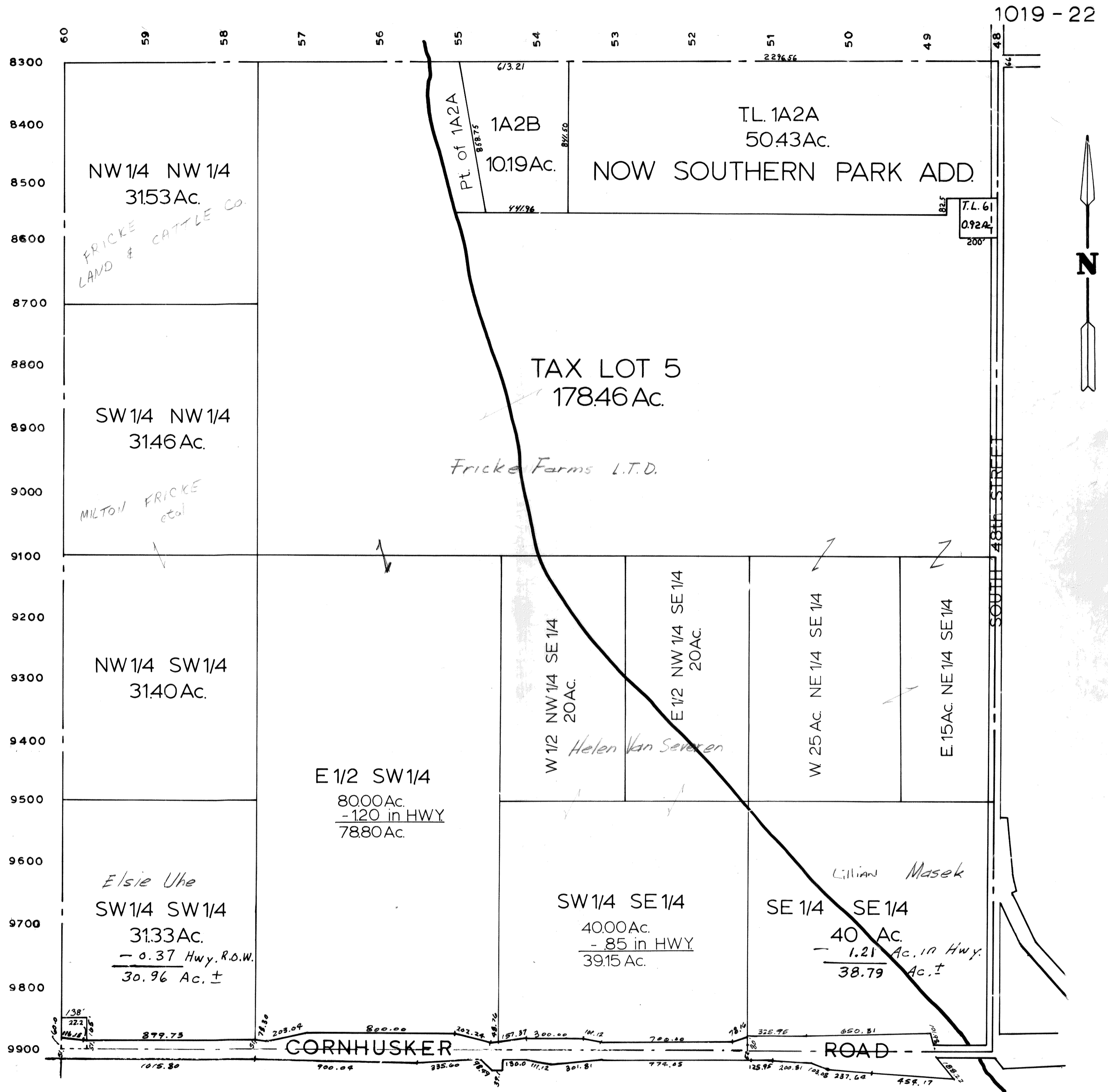


SEC.19 - T14N-R13E
SCALE: 1"= 400'



TAX LOT 7 : T.L'S , 5, E 1/2 SW1/4,
NE1/4 SE1/4, 297.26 AC. ±
TAX LOT 8 : SW1/4 NW1/4 , NW 1/4 SW1/4
62.86 AC. ±

SARPY COUNTY SURVEYOR'S OFFICE