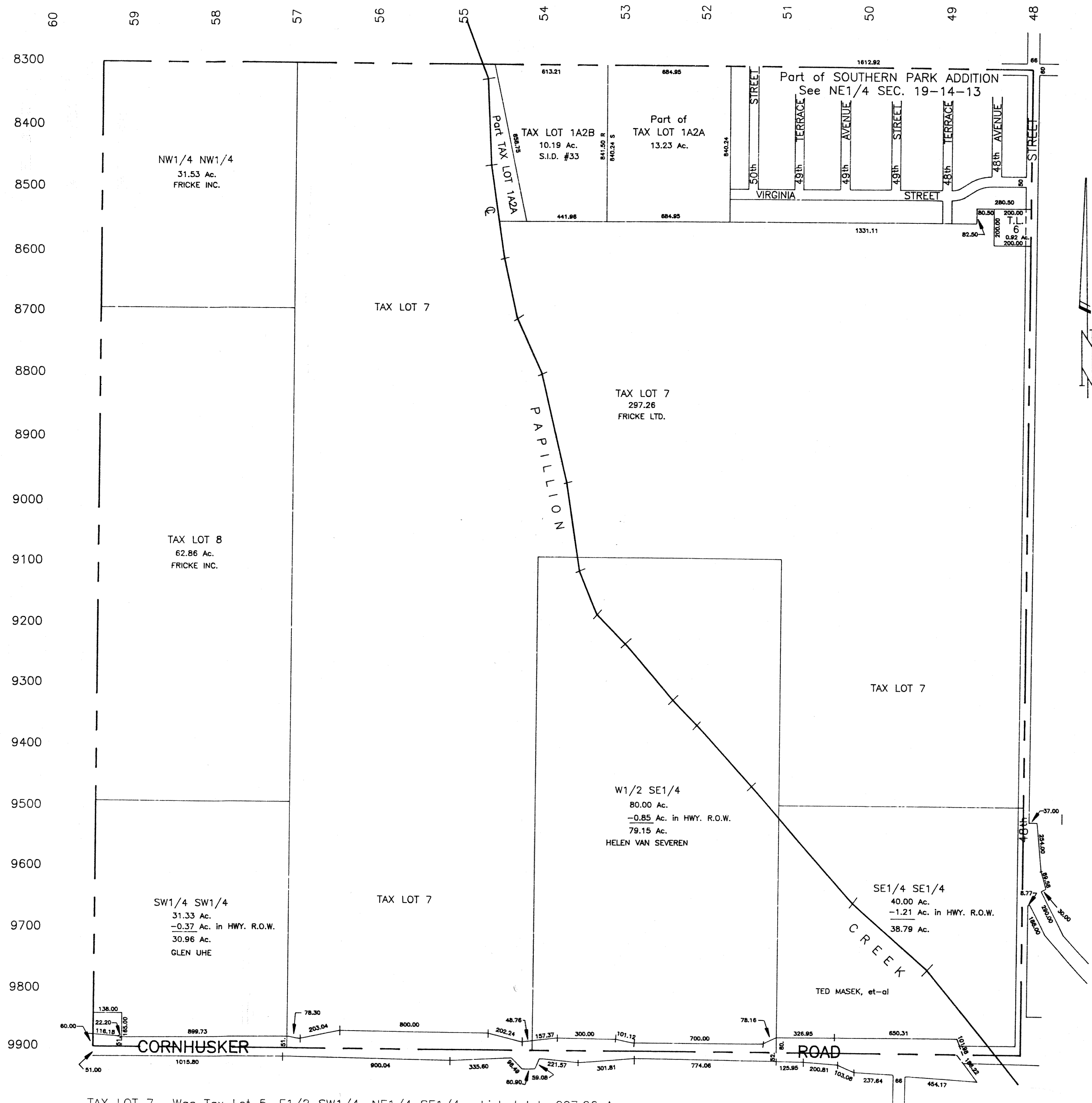


SEC. 19 T14N-R13E

SCALE 1" = 400'

1019-22



TAX LOT 7- Was Tax Lot 5, E1/2 SW1/4, NE1/4 SE1/4, which totals 297.26 Ac.

TAX LOT 8- Was SW1/4 NW1/4 and NW1/4 SW1/4, totals 62.86 Ac.

SARPY COUNTY SURVEYOR
MARCH 1961

REVISED

4-28-77

4- 2-85