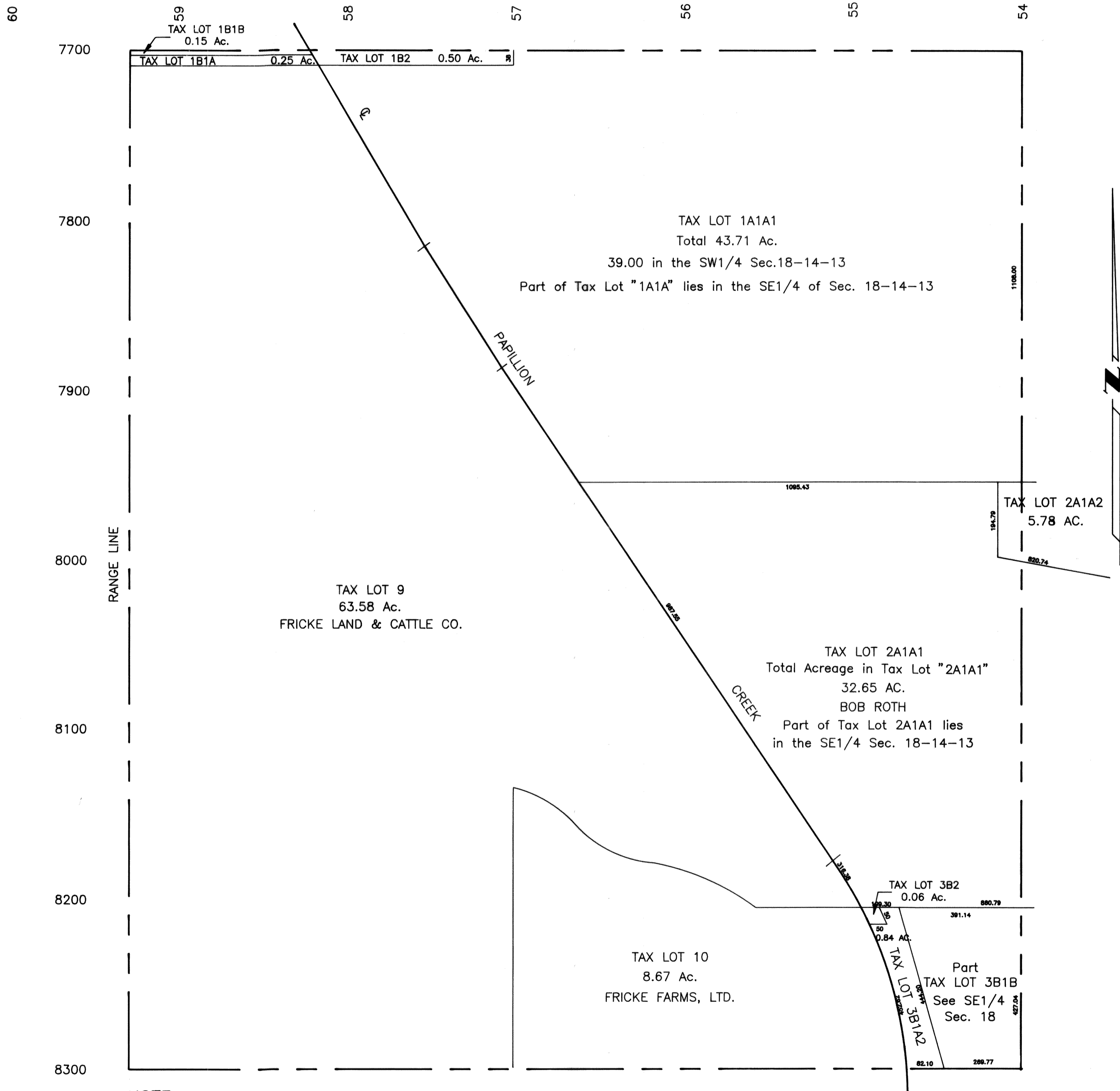


SW1/4 SEC.18 T14N R13E

SCALE 1" = 200'

1018



NOTE: SEC. 18-14-13 IS A SHORT SECTION, SINCE IT IS BOUNDED ON THE WEST BY THE RANGE LINE

SARPY COUNTY
SURVEYOR'S OFFICE

REVISIONS

- 7-23-64
- 10-16-81
- 8-22-85
- 10-15-85
- 1-14-87
- 04-14-94