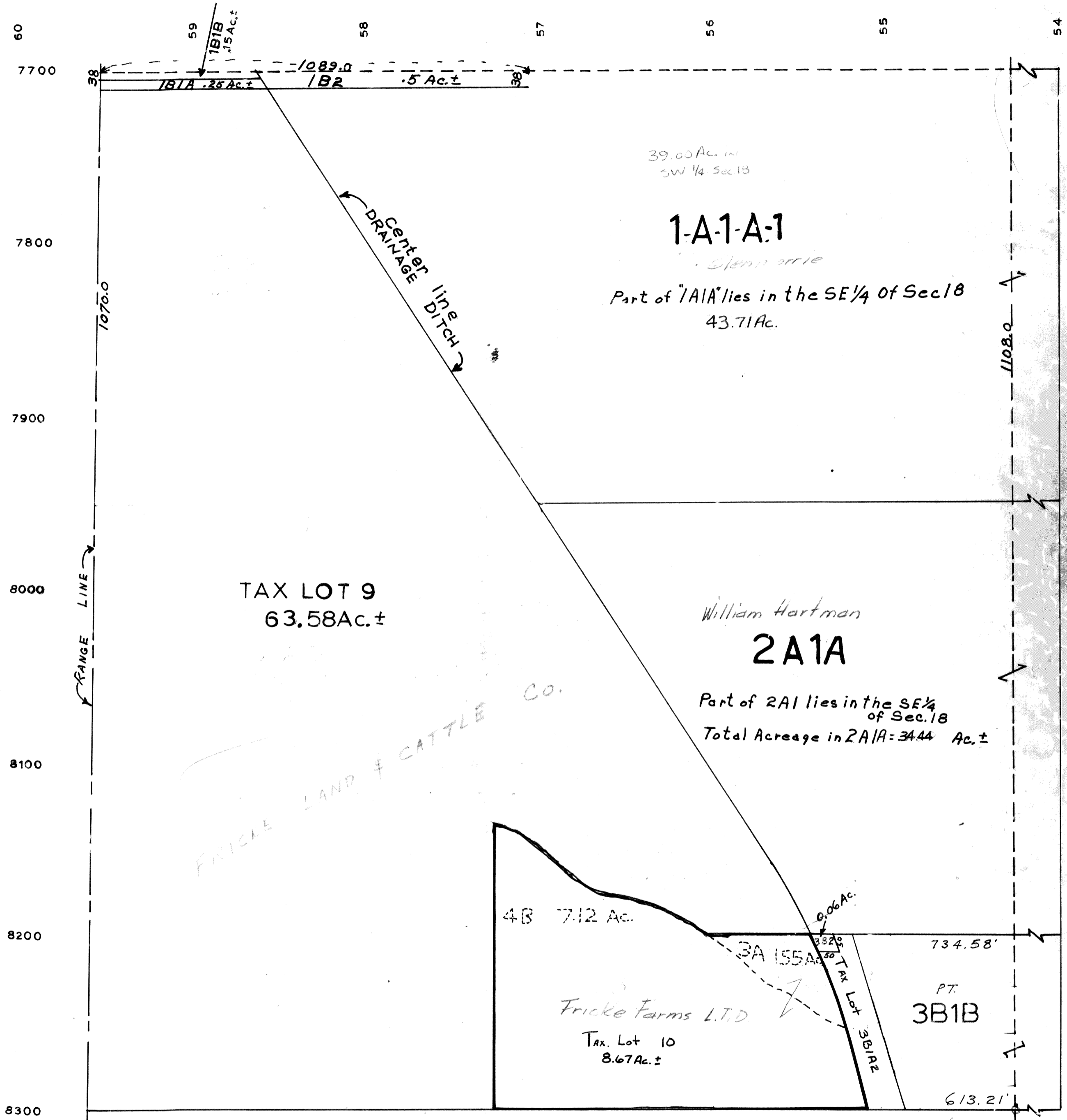


SW 1/4 SEC. 18 T14N-R13E

RONALD A RYSTROM
SARPY COUNTY SURVEYOR

1018



NOTE: SEC. 18 IS A SHORT SECTION, SINCE IT IS BOUNDED ON THE WEST BY RANGE LINE.

SARPY COUNTY SURVEYOR'S OFFICE
DECEMBER 1960

REVISED
10-16-81
8-22-85
10-15-85
1-14-87