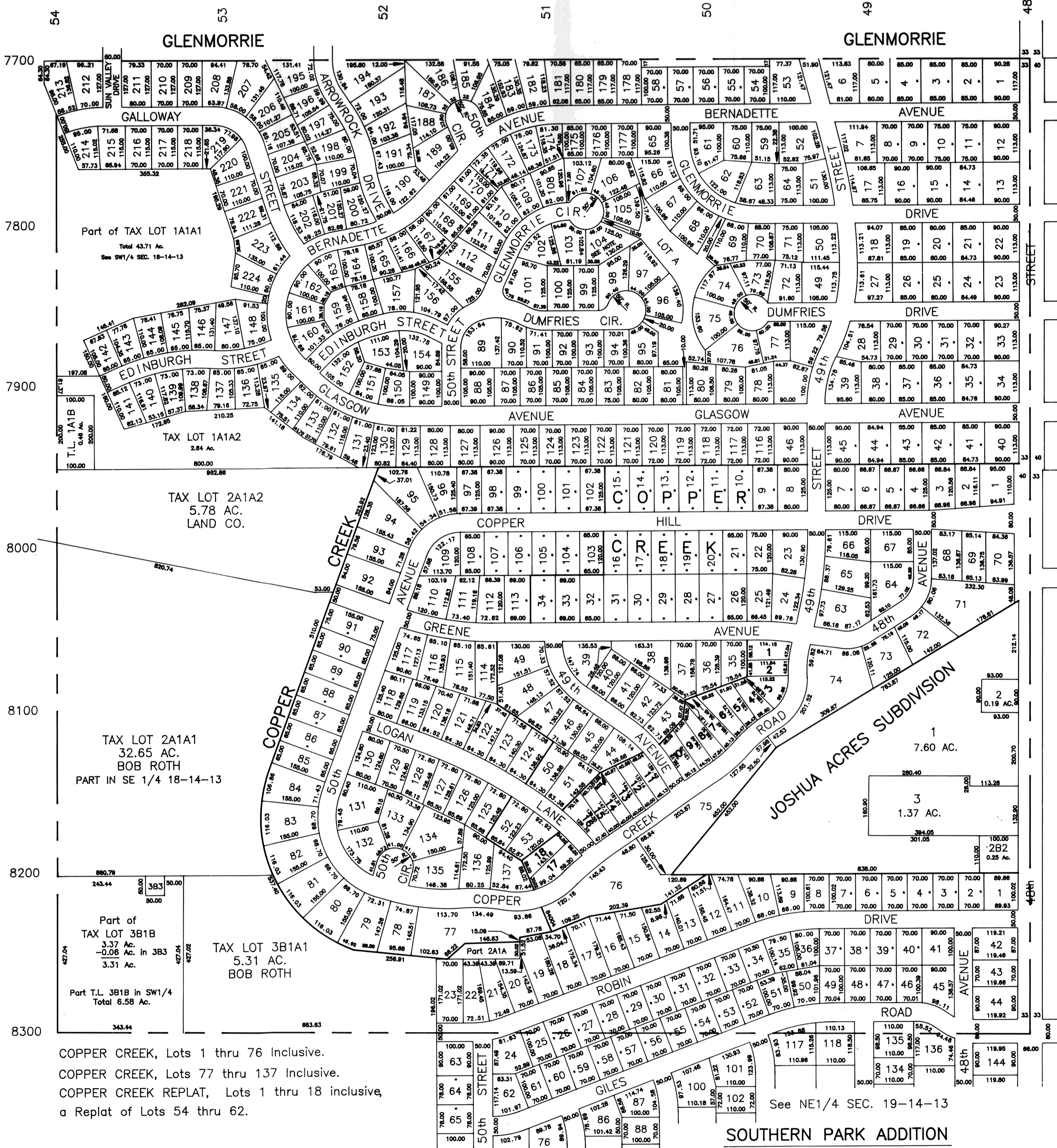


SE1/4 SEC. 18 T14N R13E

SCALE 1" = 200'

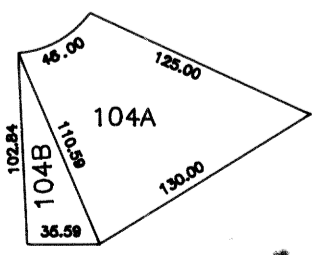
1017



COPPER CREEK, Lots 1 thru 76 Inclusive.
 COPPER CREEK, Lots 77 thru 137 Inclusive.
 COPPER CREEK REPLAT, Lots 1 thru 18 inclusive,
 a Replat of Lots 54 thru 62.

See NE1/4 SEC. 19-14-13

SOUTHERN PARK ADDITION



GLENMORRIE ADDITION
LOT SPLIT OF LOT 104

SARPY COUNTY SURVEYOR
MARCH 1966

REVISED

7-23-64	5- 6-74	2-25-86
10-13-64	8-10-78	12-12-86
2-29-66	8-22-85	1-14-87
9-22-69	9-17-85	12-20-90
6-16-71	10-15-85	5-6-93