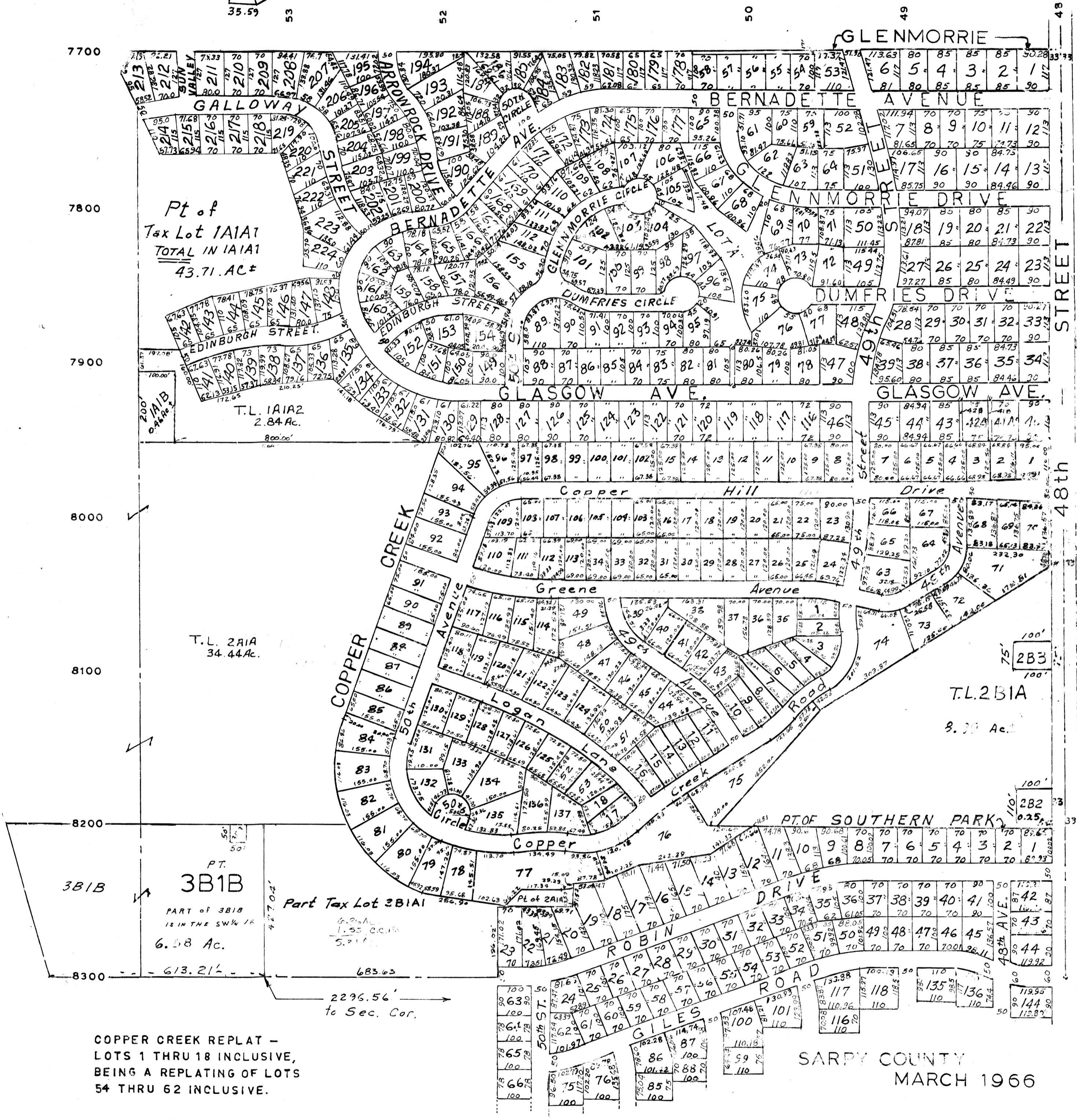
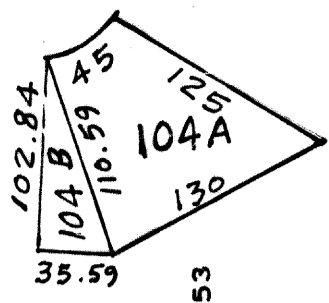


SE.1/4 SEC.18 T14N. R13E.

scale: 1" = 200'

RONALD A RYSTROM
SARPY COUNTY SURVEYOR 10.7



Pt of
Tax Lot 1A1A1
TOTAL IN 1A1A1
43.71 AC±

T.L. 1A1A2
2.84 Ac.

T.L. 2A1A
34.44 Ac.

T.L. 2B1A
8.30 Ac.

PT.
3B1B
PART OF 3B1B
IS IN THE SW 1/4 1R
6.58 Ac.

Part Tax Lot 3B1A1
6.21 Ac.
1.35 ac.±
5.86 ac.±

COPPER CREEK REPLAT -
LOTS 1 THRU 18 INCLUSIVE,
BEING A REPLATING OF LOTS
54 THRU 62 INCLUSIVE.

2296.56'
to Sec. Cor.

SARPY COUNTY
MARCH 1966

- Revised
- 10-15-85
 - 2-25-86
 - 12-12-86
 - 1-14-87
 - 10-13-64
 - 3-29-66
 - 9-22-69
 - 6-16-71
 - 5-6-74
 - 8-10-78
 - 8-22-85
 - 9-17-85