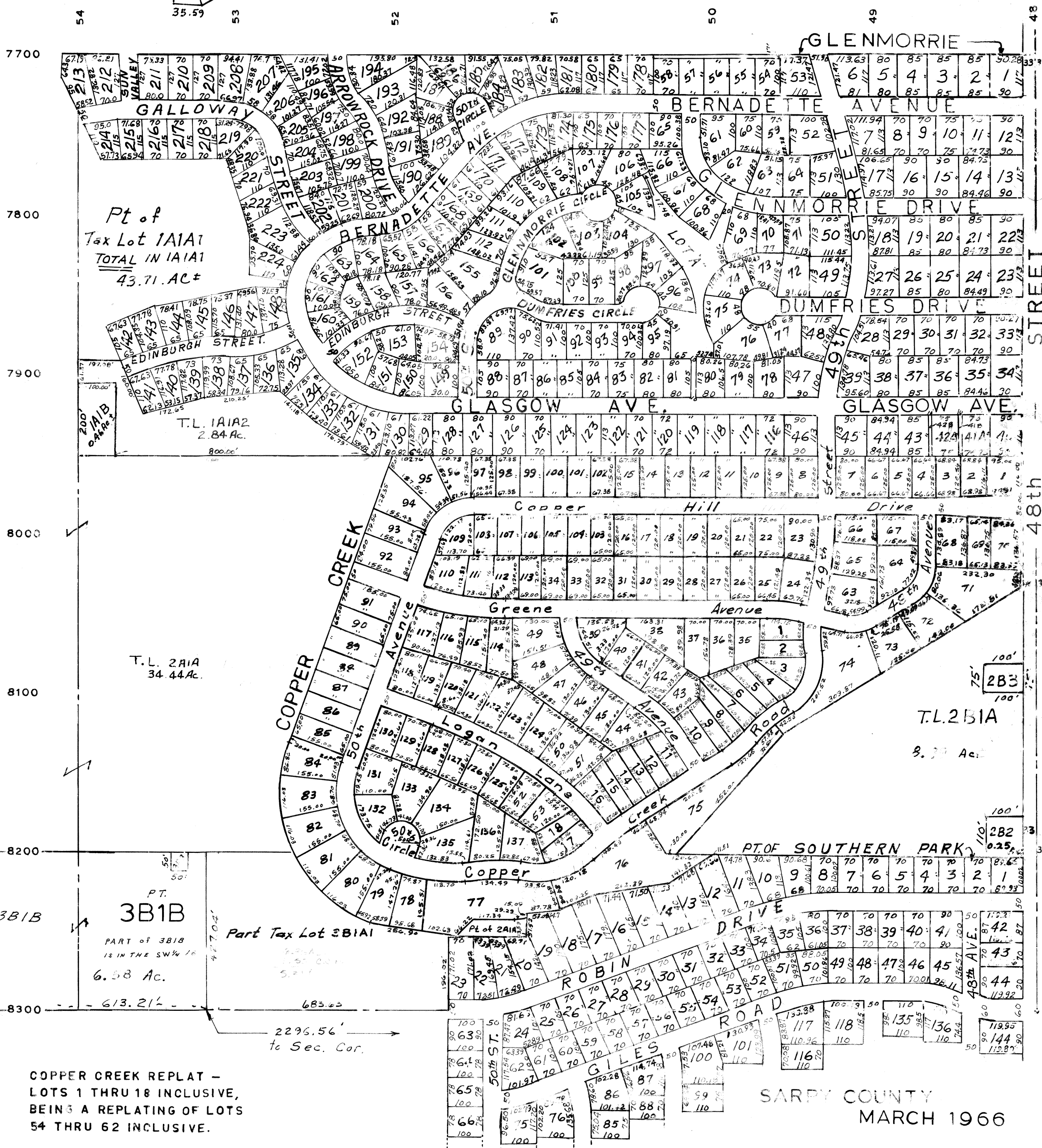
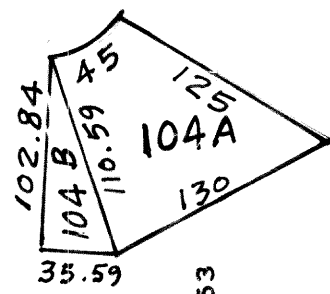


SE 1/4 SEC. 18, T14N. R13E.

scale: 1" = 200'

RONALD A RYSTROM
SARPY COUNTY SURVEYOR 10.7



COPPER CREEK REPLAT -
LOTS 1 THRU 18 INCLUSIVE,
BEING A REPLATING OF LOTS
54 THRU 62 INCLUSIVE.

SARPY COUNTY
MARCH 1966

- Revised
- 10-15-85
 - 2-25-86
 - 12-12-84
 - 1-14-87
 - 10-13-64
 - 3-29-66
 - 3-22-69
 - 6-16-71
 - 5-6-74
 - 8-10-78
 - 8-22-85
 - 9-17-85
 - 7-23-14