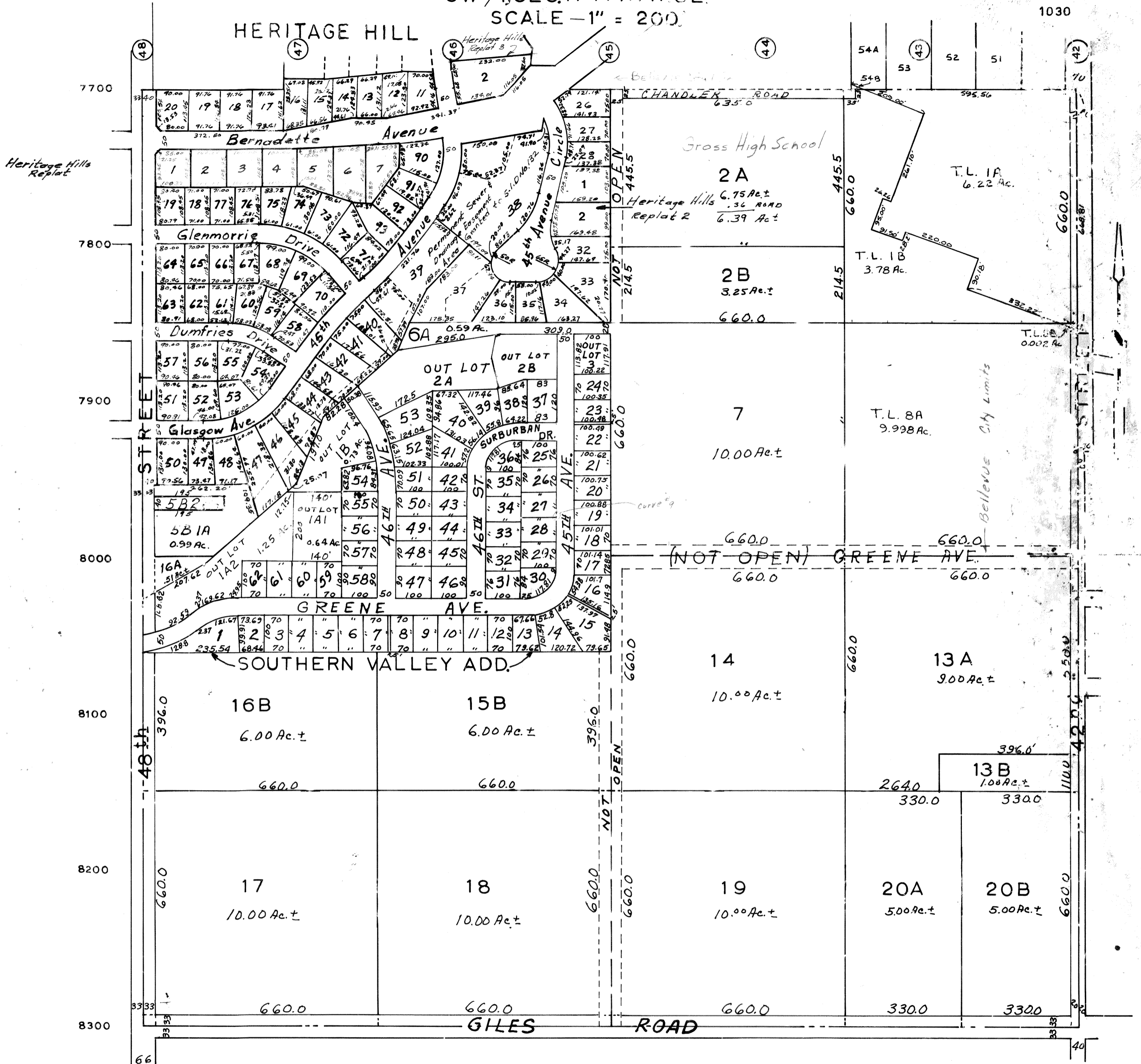


SW 1/4, SEC. 17-T14-N-R3E.  
SCALE - 1" = 200'

1030



SARPY COUNTY SURVEYORS OFFICE  
OCTOBER 1967

REVISED  
12/30/85 9-22-64  
2-26-90 4-24-67  
5-31-90 8-3-77  
10-17-90 9-20-84  
8-6-85