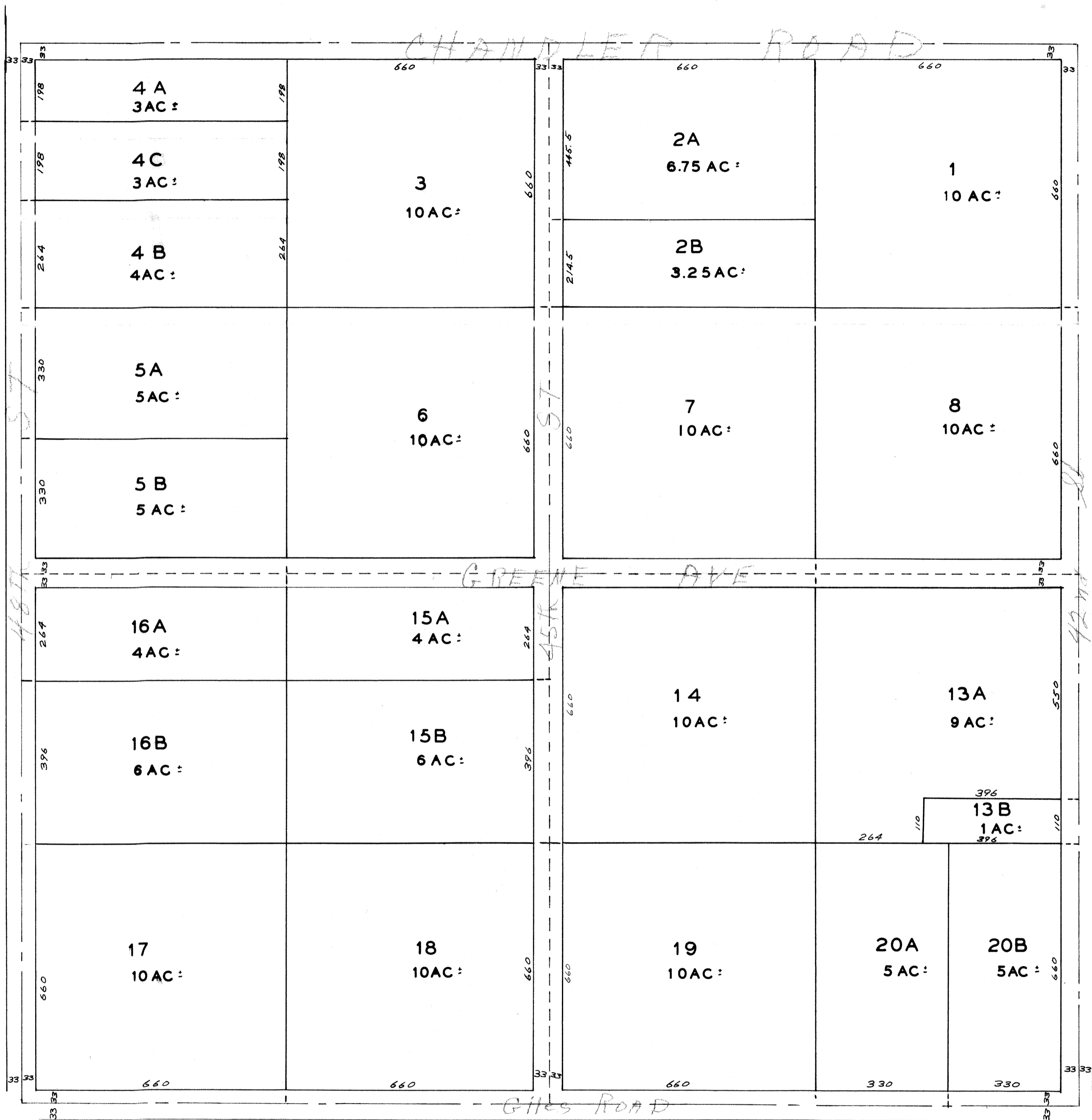


S W1/4 SEC 17-T14-R13 E

1" = 200'



NOTE: 33' FOR HIGHWAY RESERVED ON ALL FOUR SIDES OF EACH 40 ACRE TRACT IN SOUTH 1/2 S.E. 1/4, SEC. 17, TWP. 14 N., RNG. 13 E. SEE PAGE 119 TAX LOT RECORD BOOK NO. 2.

OFFICIAL PLAT
SARPY COUNTY SURVEYOR'S OFFICE
FEBRUARY 1961

F. I. W. - N. P. W.