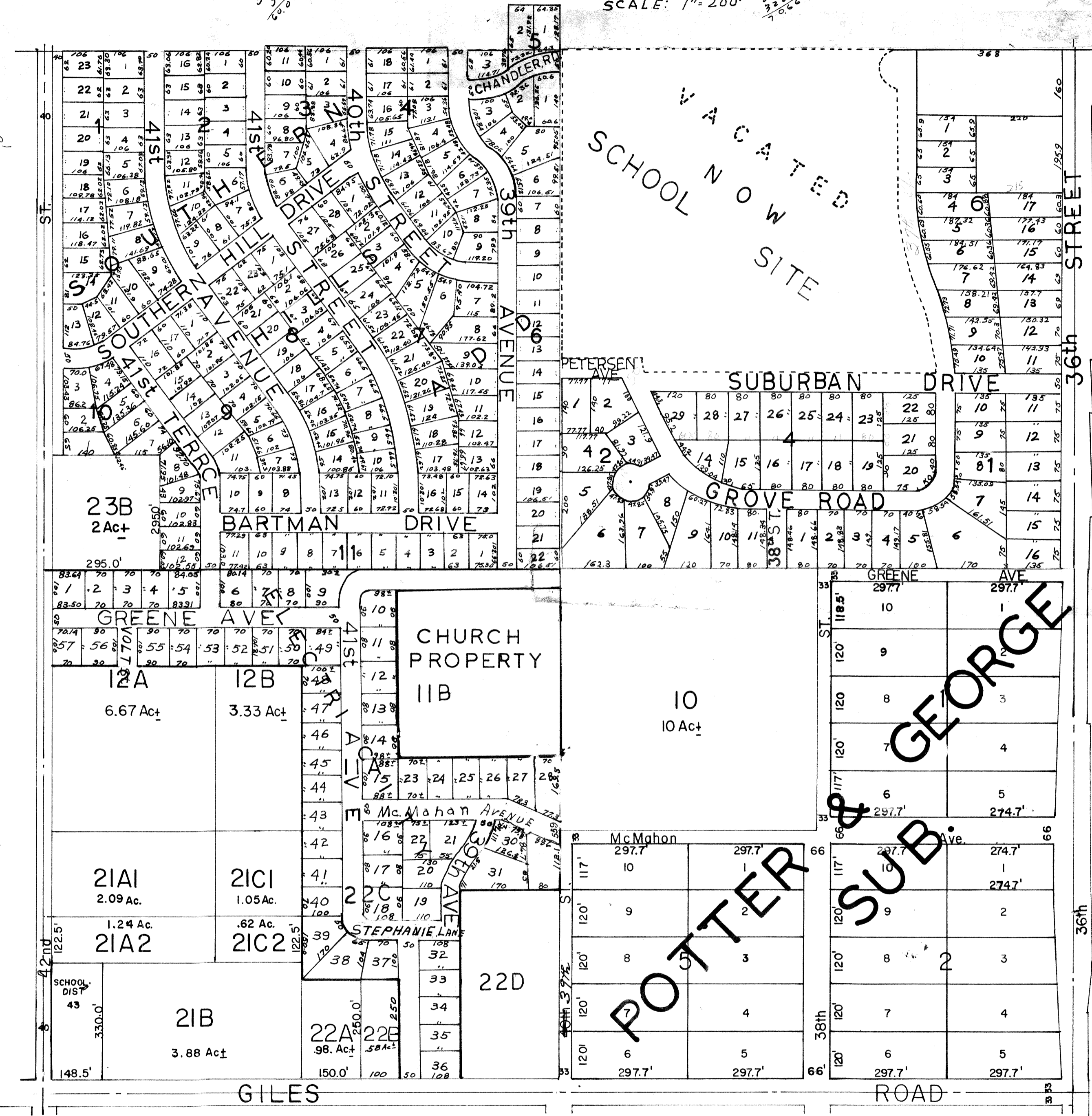


SE 1/4 SEC. 17 T14N R13E

SCALE: 1" = 200'



NOTE: 33' For highway reserved on all four sides of each 40 Acre tract in S. half SE. quarter Section 17 Twp. 14 Rge 13 E  
 SEE PAGE 119 TAX LOT RECORD BOOK No. 2

OFFICIAL PLAT  
 Sarpy County SURVEYOR'S Office  
 December 1957  
 F.I.W. - N.P.W.  
 REVISED JUNE 1960 MJS  
 REVISED JUNE 1961 WMG