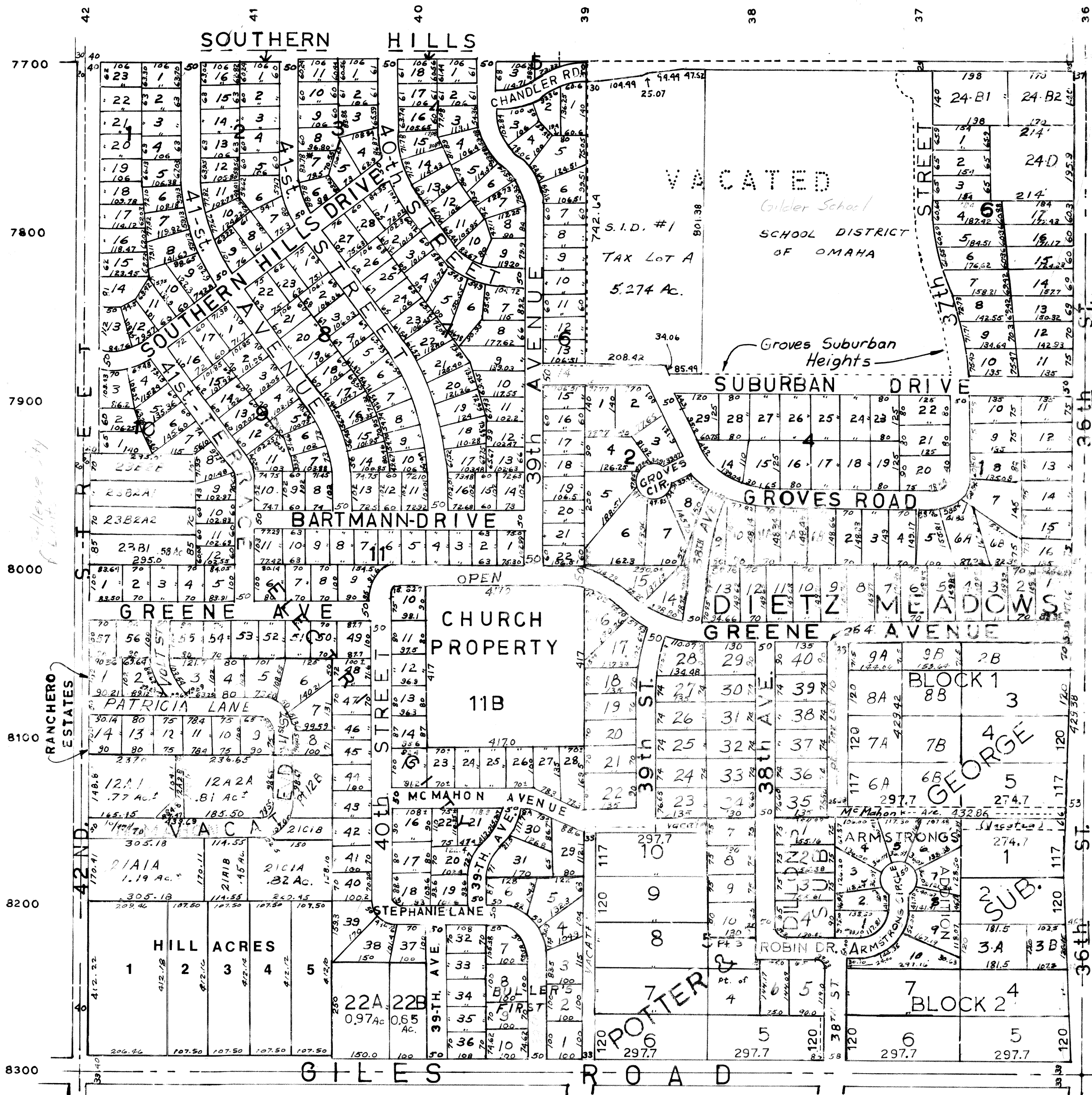


SE1/4-SEC.17-T14N-R13E

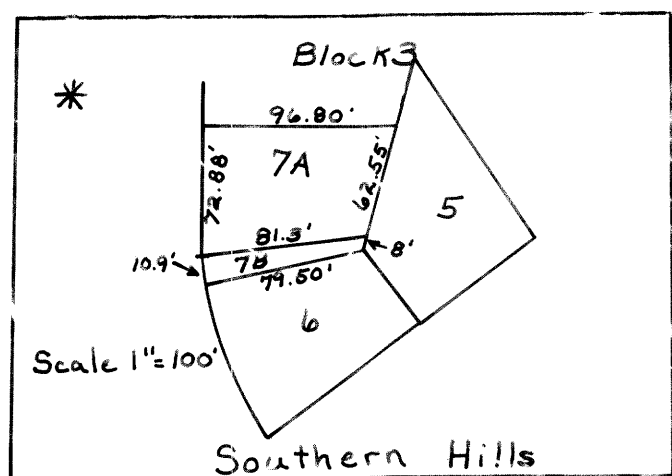
SCALE-1"=200'

RONALD A RYSTROM  
SARPY COUNTY SURVEYOR

1029



NOTE--33' FOR HIGHWAY RESERVED ON ALL FOUR SIDES OF EACH 40 ACRE TRACT IN SO. HALF S.E. QUARTER SECTION 17 TWP. 14 RGE. 13 E.  
SEE PAGE 119 TAX LOT RECORD BOOK NO. 2.



SARPY-COUNTY-SURVEYOR'S-OFFICE  
DECEMBER-1957

- Revised
- 6-60
- 12-60
- 7-23-64
- 8-27-64
- 6-17-65
- 10-25-65
- 8-20-66
- 1-26-68
- 4-27-83
- 3-8-89