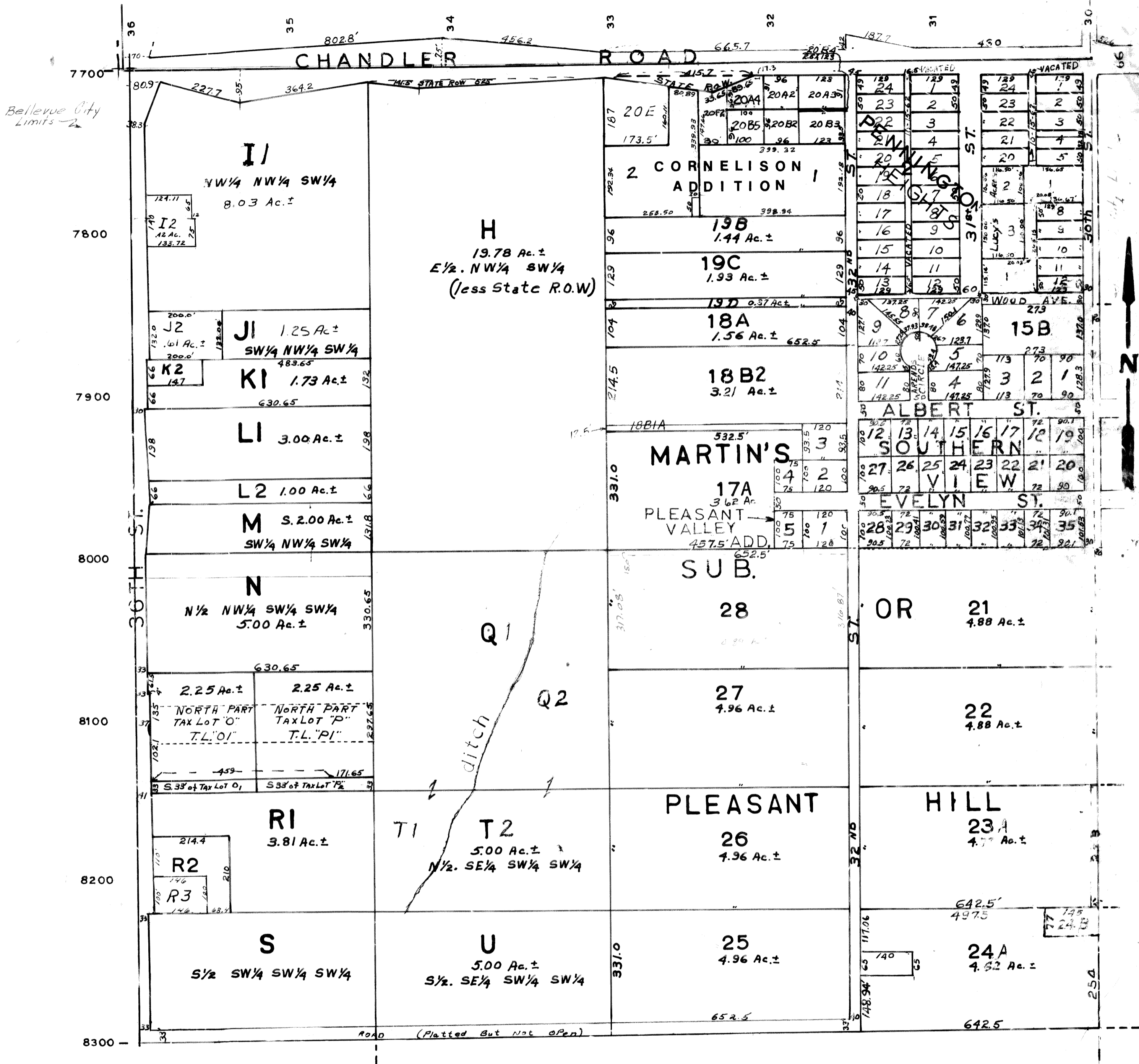


SW1/4 SEC.16 T14N R13E
scale: 1"=200'

RONALD A RYSTROM 1042
SARPY COUNTY SURVEYOR



SARPY COUNTY SURVEYOR'S OFFICE
SEPTEMBER 1961

REVISED
10-30-74
8-9-76
1-18-78
10-17-80
7-18-89