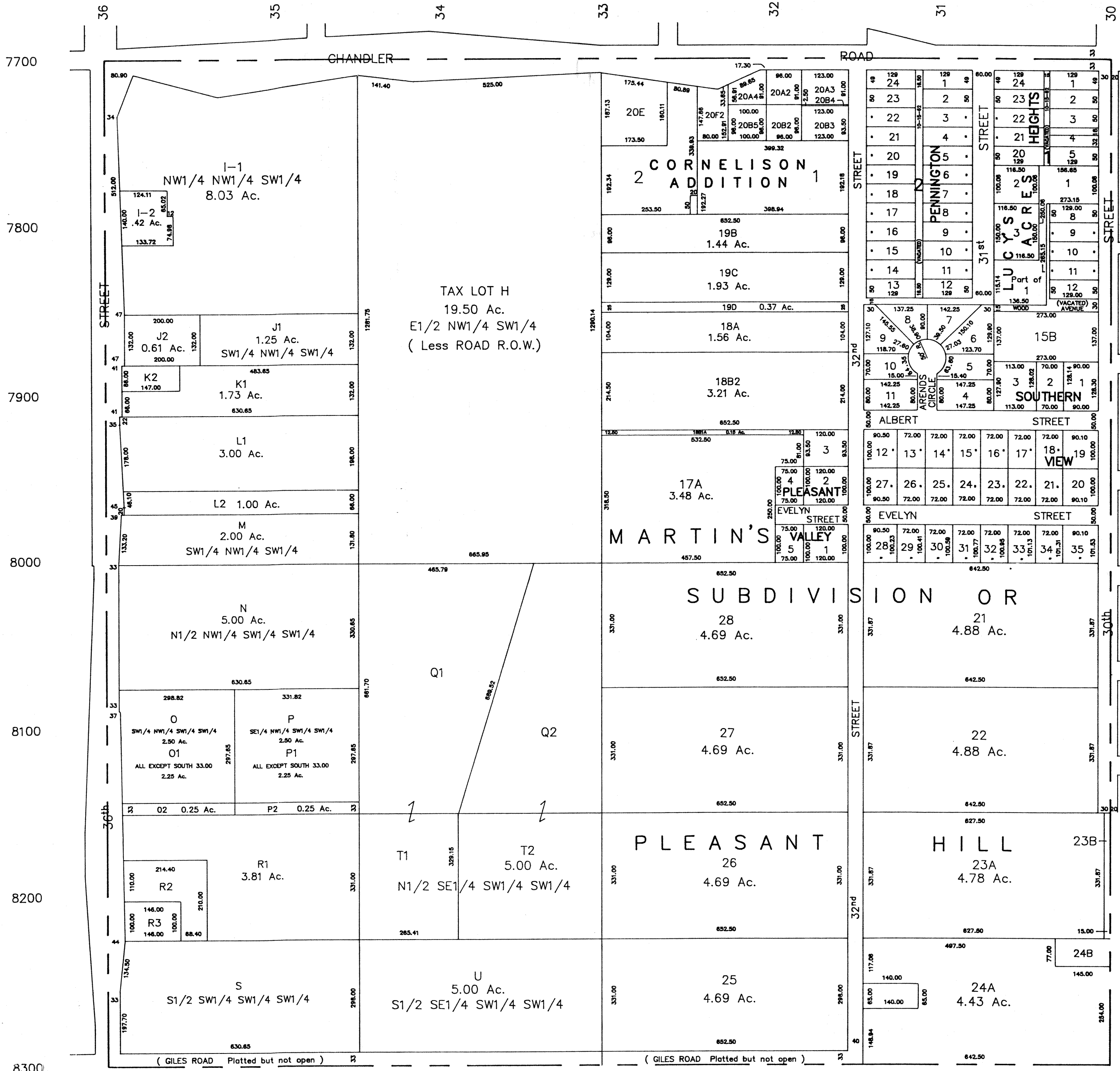


SW1/4 SEC. 16-T14N-R13E

SCALE 1" = 200'

RONALD A. RYSTROM
SARPY COUNTY SURVEYOR

1042



SARPY COUNTY SURVEYOR
SEPTEMBER 1961

REVISED

- 10-30-74
- 8- 9-76
- 1-18-78
- 10-17-86
- 7-18-89