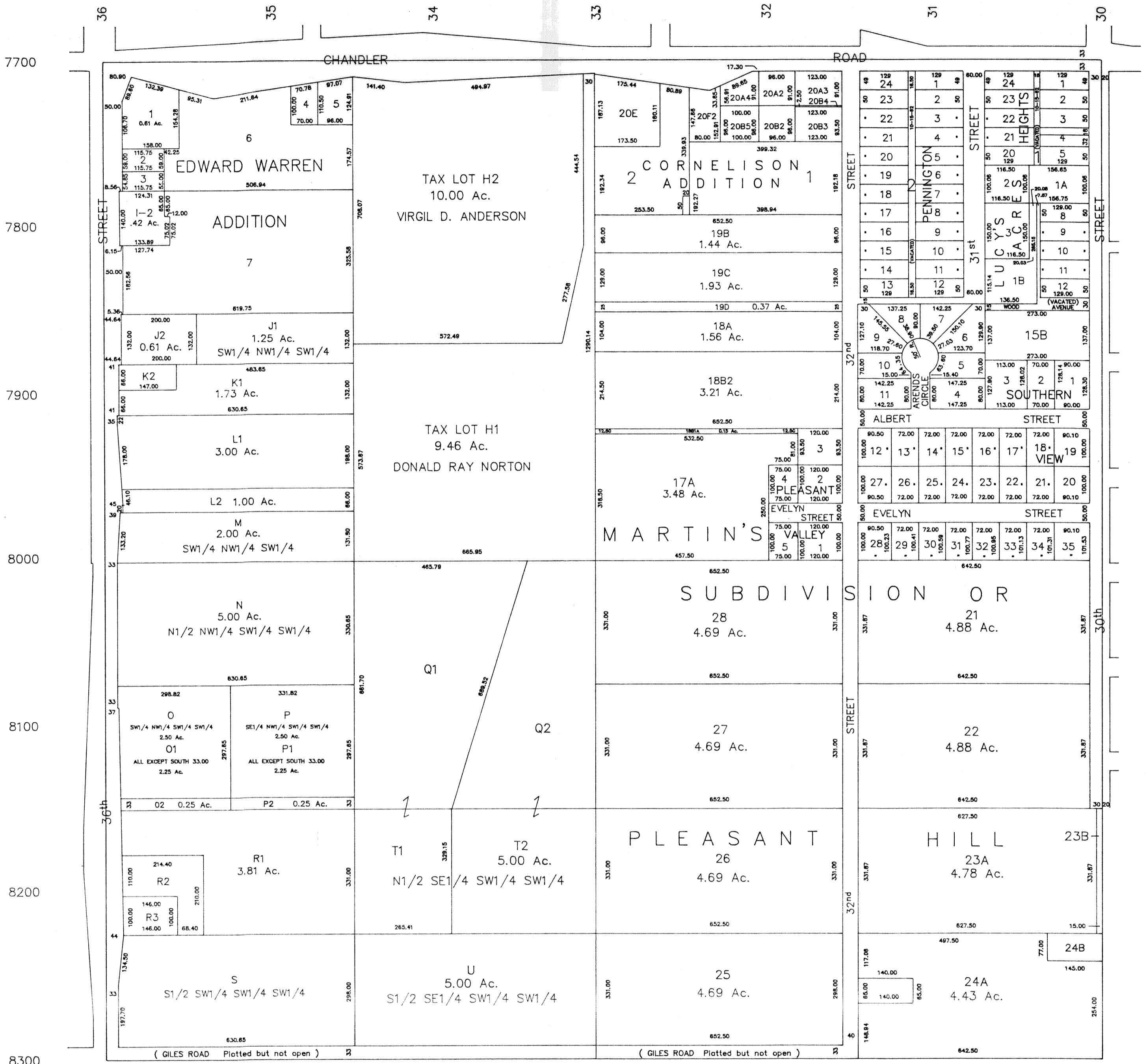


SW1/4 SEC. 16-T14N-R13E

SCALE 1" = 200'

1042



SARPY COUNTY SURVEYOR  
SEPTEMBER 1961

- REVISED
- 10-30-74
  - 8- 9-76
  - 1-18-78
  - 10-17-86
  - 7-18-89
  - 4-30-91
  - 5-13-91
  - 7-09-91