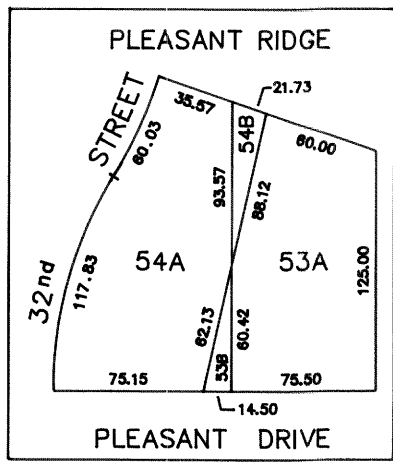
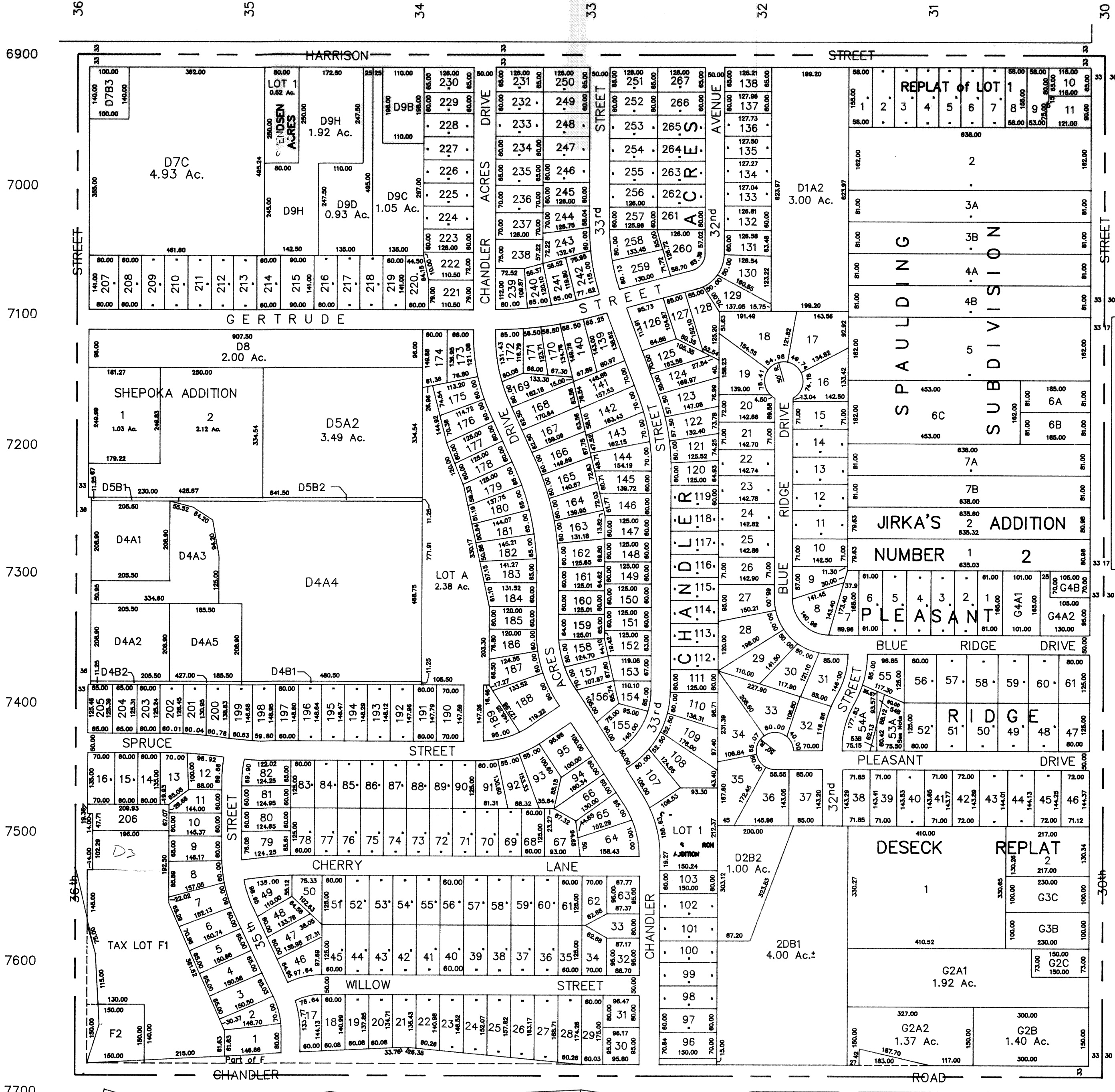


NW1/4 SEC. 16-T14N-R13E
SCALE 1" = 200'

SARPY COUNTY SURVEYOR

1040



NOTE: Lot split of Lots 53 & 54
see Survey file and Legal Description

SARPY COUNTY SURVEYOR
AUGUST 1961

REVISED

- 1- 8-71
- 11-18-92
- 12- 6-73
- 6-29-78
- 12-14-78
- 11- 9-82
- 3-11-83
- 5-11-83
- 2-10-88
- 7-15-88