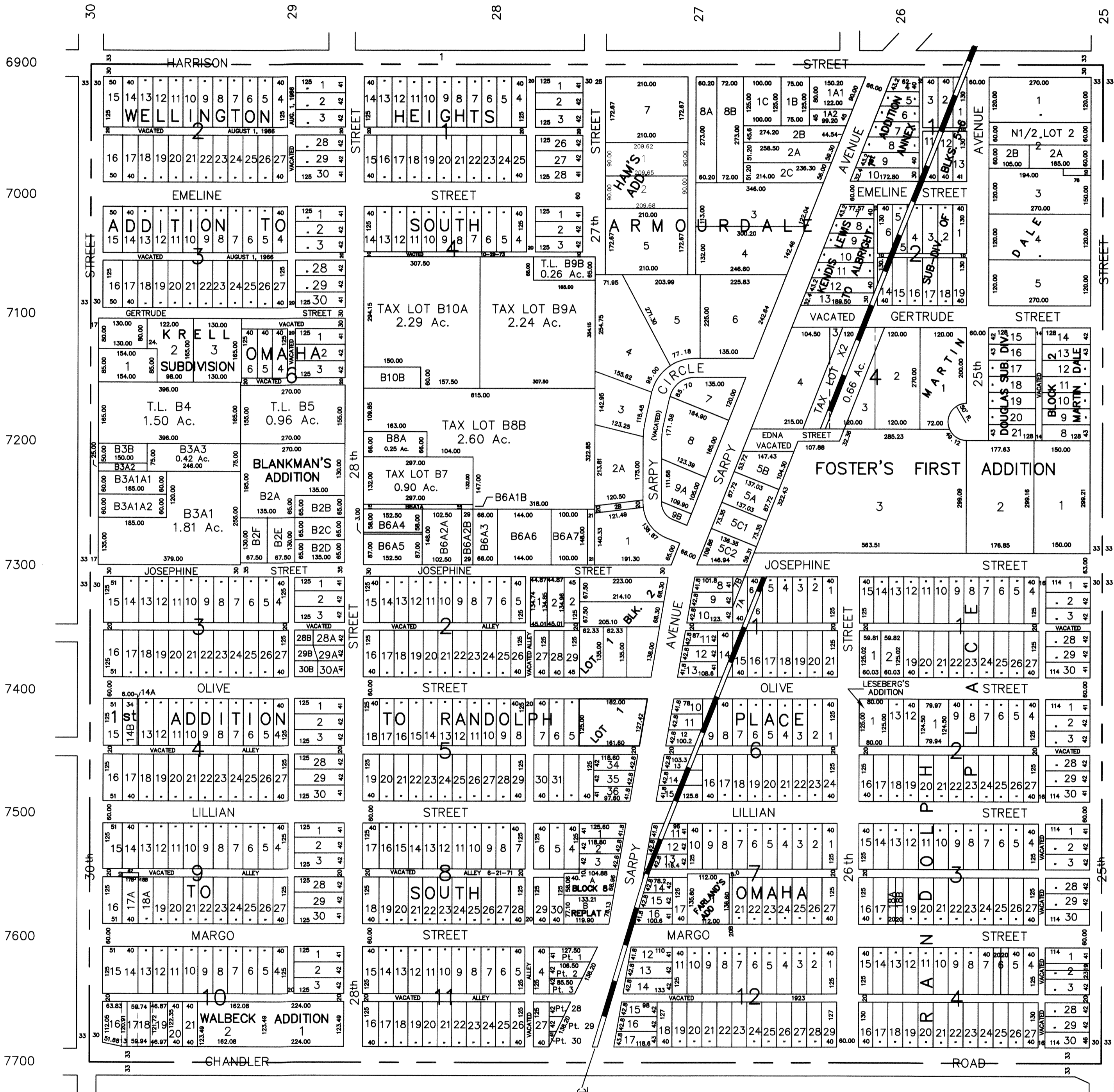


This map constitutes a representation based on information provided to the Sarpy County Surveyors Office by other individuals and organizations. Therefore no representations regarding the accuracy of the size, dimensions, measurements, condition, platting or location of the within described area are made. Should such information be required for construction, zoning or other purposes, the services of a private surveyor and/or title search should be secured.

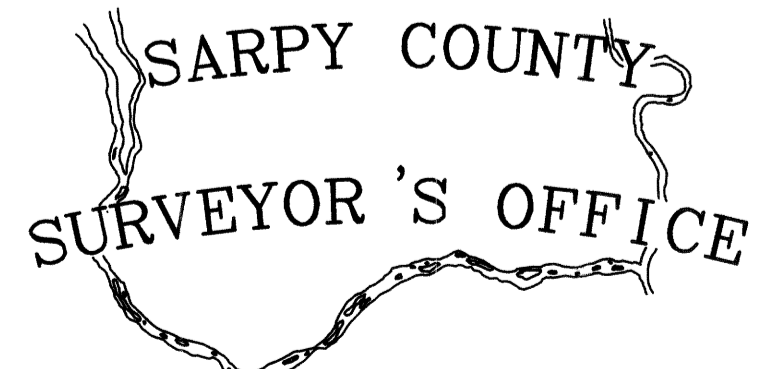
NE1/4 SEC. 16 T14N-R13E

SCALE 1" = 200'

1039



TAX LOT XI
(FORMER C.R. and P. R.R.)



- WALBECK ADDITION (LOTS 1 and 2)
A REPLAT OF LOTS 22-30 INCL. IN BLOCK 10
- MADONNA HOMES ADDITION (LOT 1)
A REPLAT OF LOTS 11 and 12 BLOCK 2
- LANG and TIPPERY (LOTS 1 and 2)
A REPLAT OF LOTS 16,17 and 18 BLOCK 1
- HABITAT FOR HUMANITY ADDITION
A REPLAT OF LOTS 3 and 4, Block 2

- REVISIONS
- 3-12-63
 - 7- 8-87
 - 9-11-68
 - 6- 5-89
 - 8- 2-83
 - 11- 7-89
 - 6-21-84
 - 10-11-94
 - 9-25-85
 - 09-07-95-PLAT
 - 9-18-86
 - 10-22-97-PLAT
 - 12-16-97-ADMIN PLAT