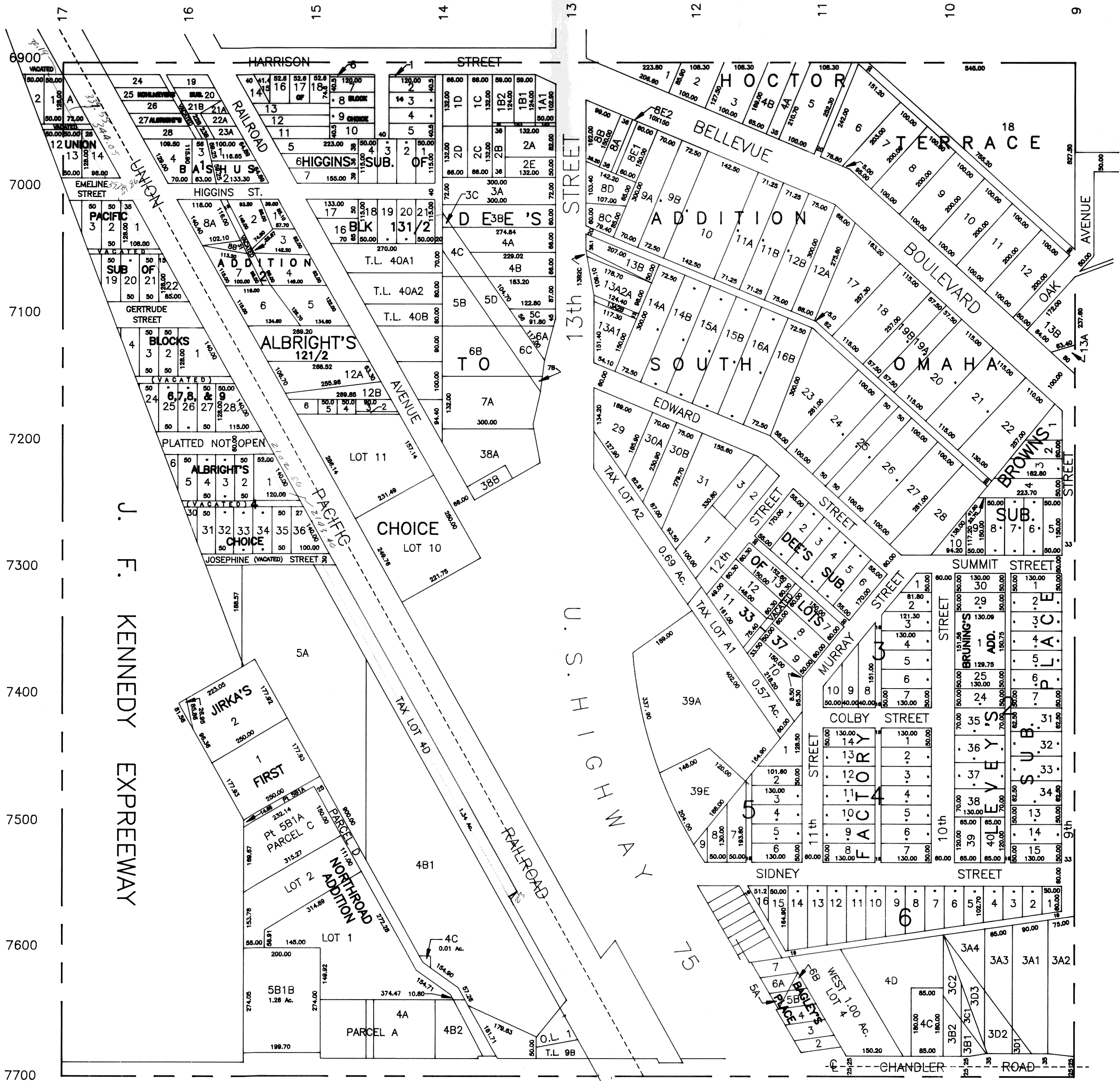


NE1/4 SEC. 15 T14N R13E

SCALE 1" = 200'

1051



J. F. KENNEDY EXPREWAY

U.S. HIGHWAY

SARPY COUNTY SURVEYOR  
DECEMBER 1960

REVISED

- 7-13-64
- 3-27-73
- 3-16-82
- 11- 8-85
- 9-16-86
- 12- 3-86
- 5- 6-87
- 5-25-88
- 9-13-88
- 4-13-89
- 5- 4-92

