

18.87
14.58

MISSOURI RIVER
BANK 1956

C. B. & Q. R.R. 4.73

G 1A

Young Womens Christian Association

H
4.00 AC. ±

742.5

234.96

234.96

Fontenelle Forest Assn.

Fontenelle Forest Assn.

I 1A

Bellevue City Limits

Fontenelle Forest Assn.

Fontenelle Forest Assn.

FITZPATRICKS REPLAT

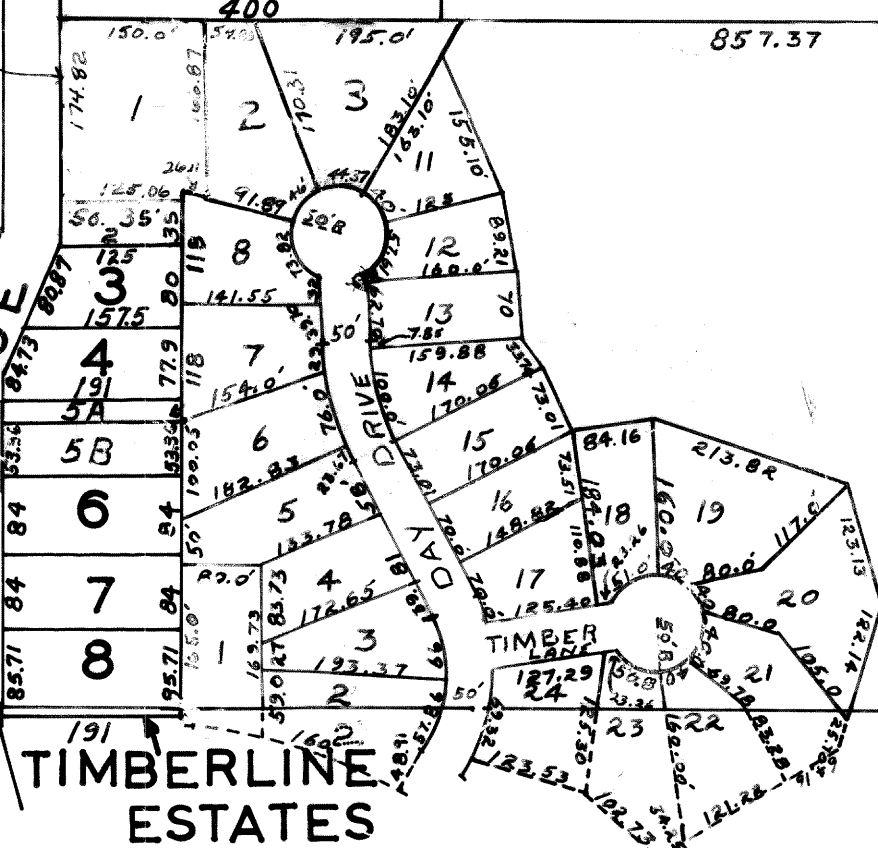
BLVD.

BELLEVEUE

CHILDS RD.

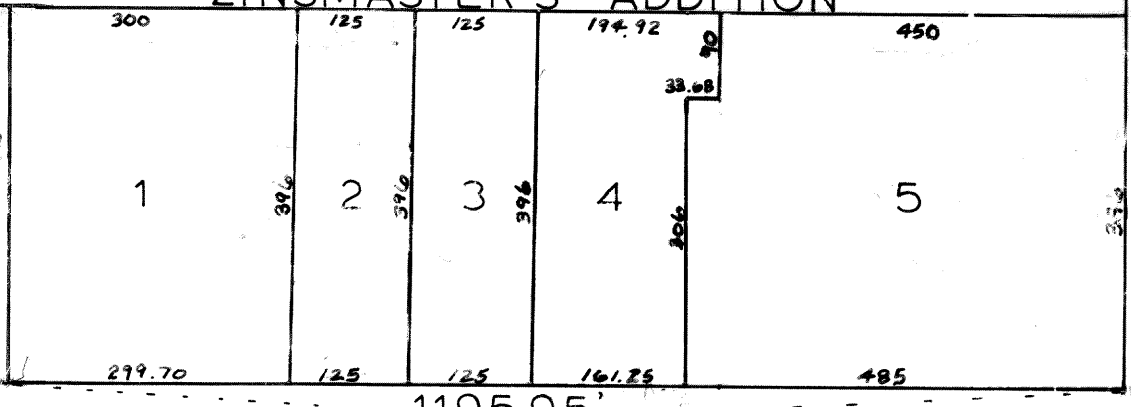
TIMBERLINE ESTATES

400
I 1B1
90
I 1B3
90
I 1B2
90
400



105'

ZINSMASER'S ADDITION



1195.95'

SARPY COUNTY SURVEYOR'S OFFICE
OCTOBER-1965

Revised
6-23-71
4-5-76
3-18-77
6-