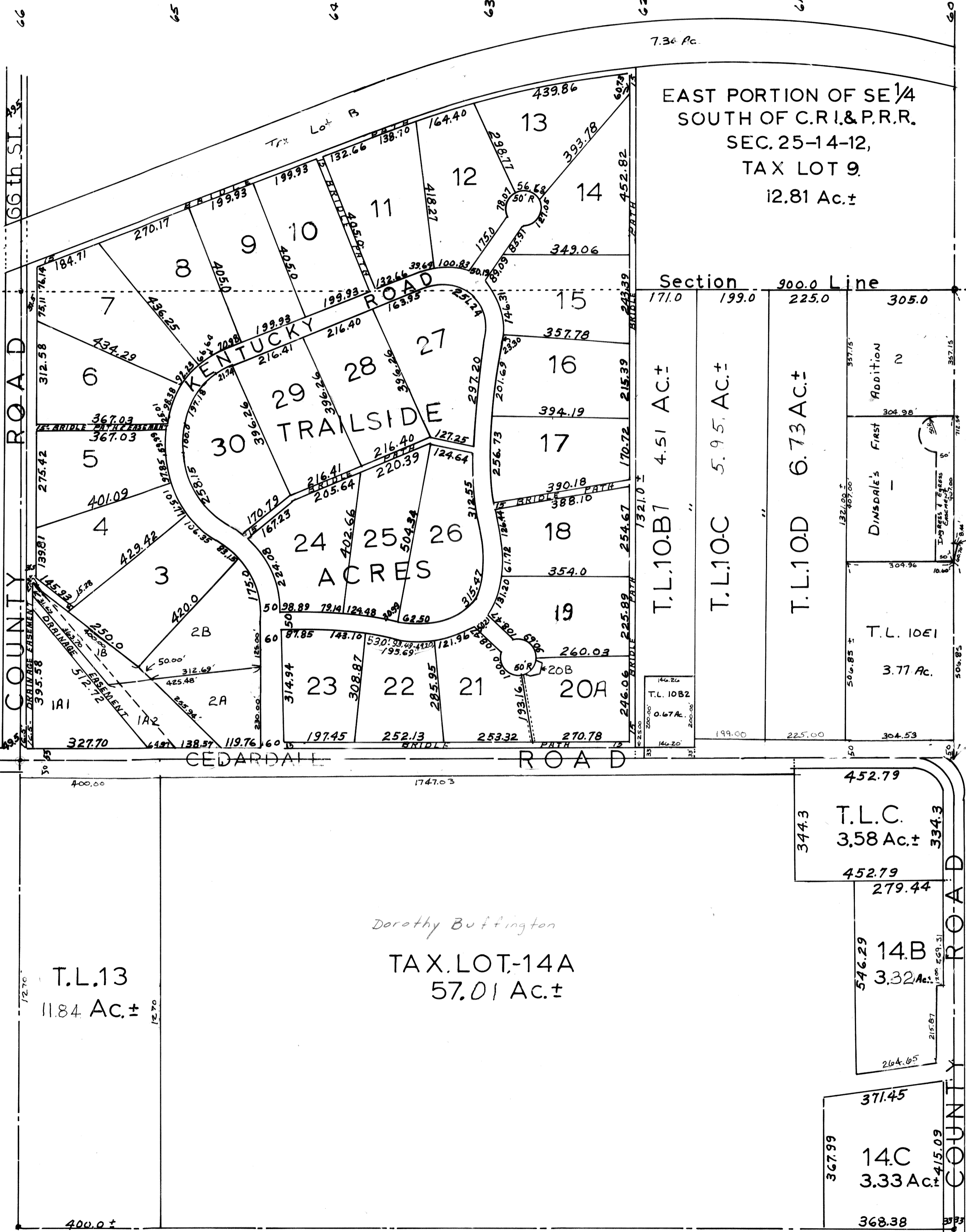


NE 1/4 SEC. 36 & PART OF SE 1/4 SEC. 25 - T14N-R12E.

SCALE - 1" = 200'

1923



SARPY COUNTY SURVEYOR'S OFFICE

SEPTEMBER - 1971

REVISED
 11/13/86 4-6-95
 11/25/88 5-18-95-06751
 5-18-95-06753