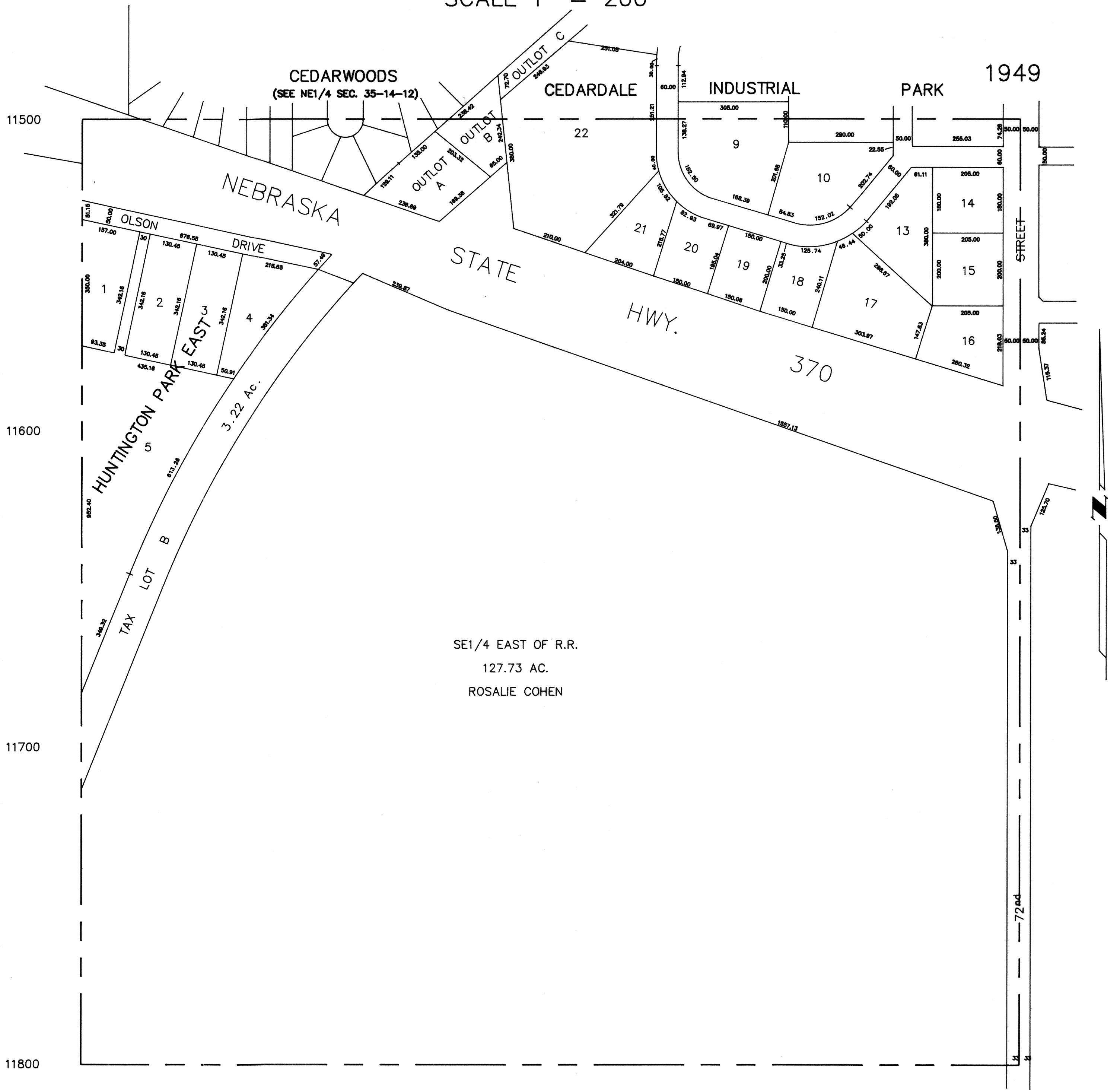


SE1/4 SEC. 35-T14N-R12E

SCALE 1" = 200'



SE1/4 EAST OF R.R.
127.73 AC.
ROSALIE COHEN

SARPY COUNTY
SURVEYOR'S OFFICE

REVISIONS

- 05-02-90
- 06-29-90
- 07-20-93
- 11-18-93