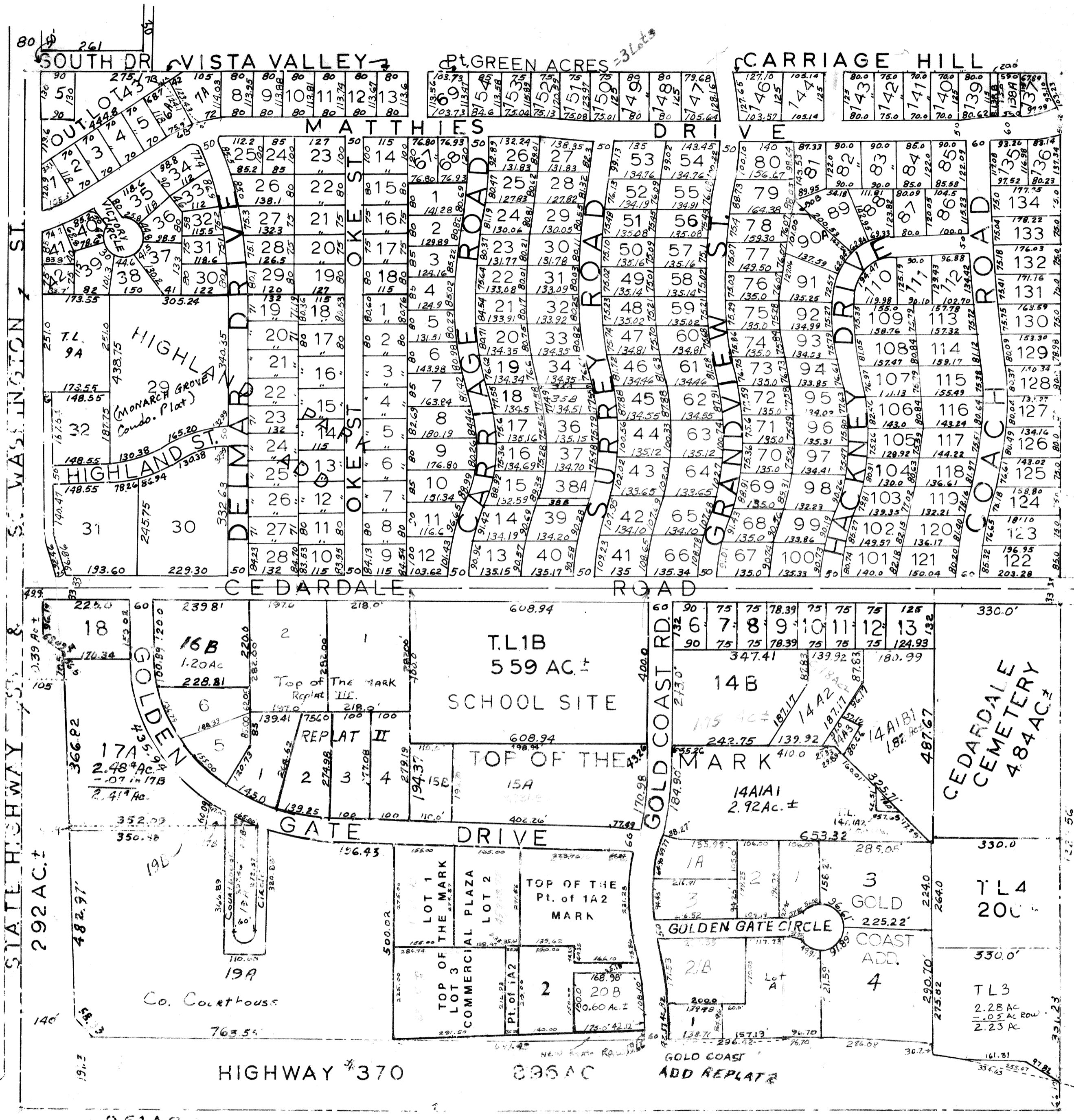


NW 1/4 SEC. 35-T14N-R12E.  
SCALE—1" 200'

1948



SARPY COUNTY SURVEYOR'S OFFICE  
SEPTEMBER-1962

- Revised
- 9/20/75
  - 7/25/65
  - 7/19/64
  - 6-13-88
  - 3-20-88
  - 5-23-69
  - 6-27-74
  - 10-1-74
  - 3-12-75
  - 3-15-75
  - 3-9-77
  - 7-20-77