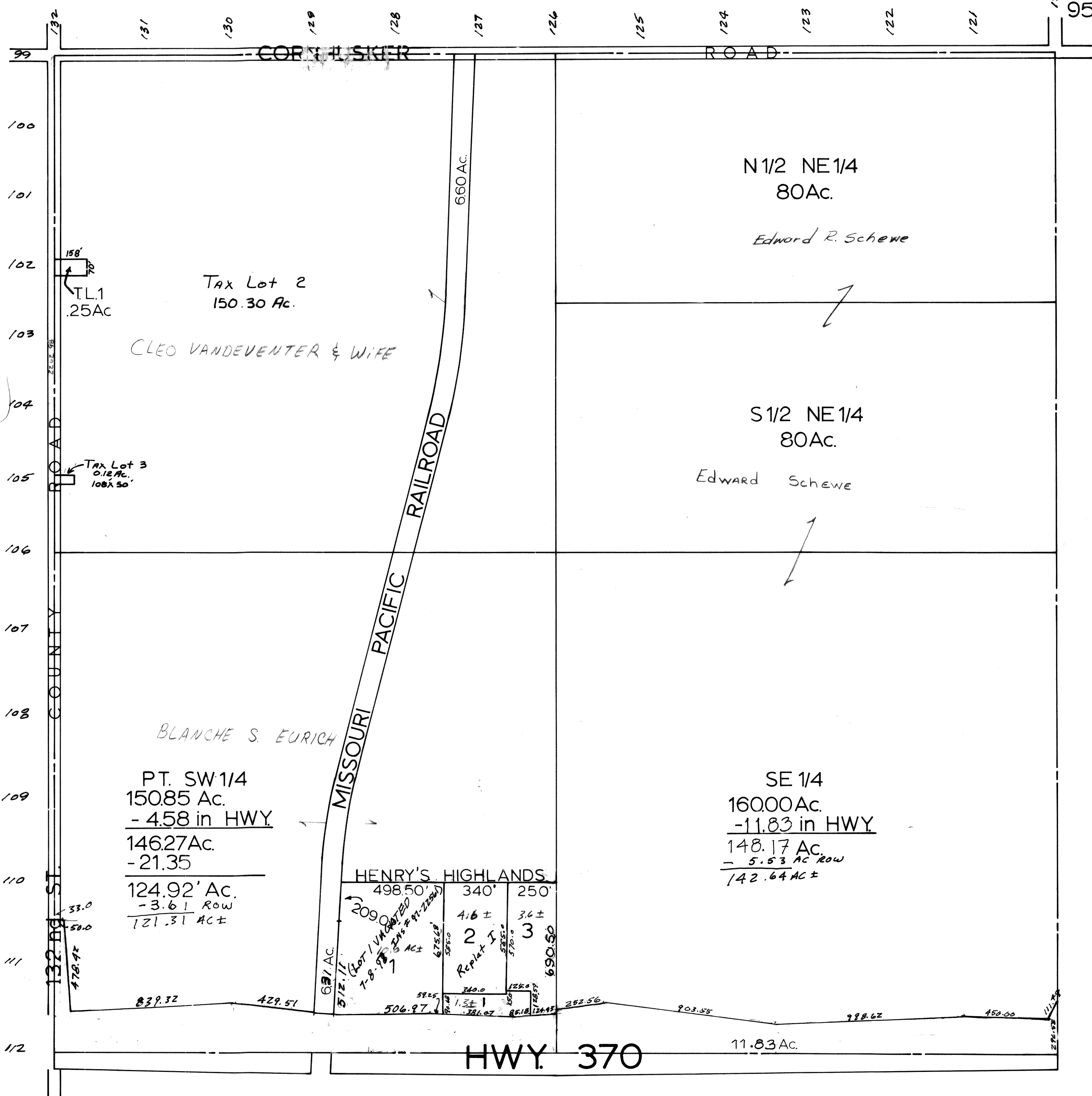


SEC 30 - T14N-R12E

SCALE: 1" = 400'

951 - 54



SARPY COUNTY SURVEYOR'S OFFICE

MARCH — 1958

REVISED - JANUARY — 1961

JULY — 1963

JUNE — 1978

4-09-97 - ROW
9-18-97 - Plat
10-16-98 - Plat VAC.