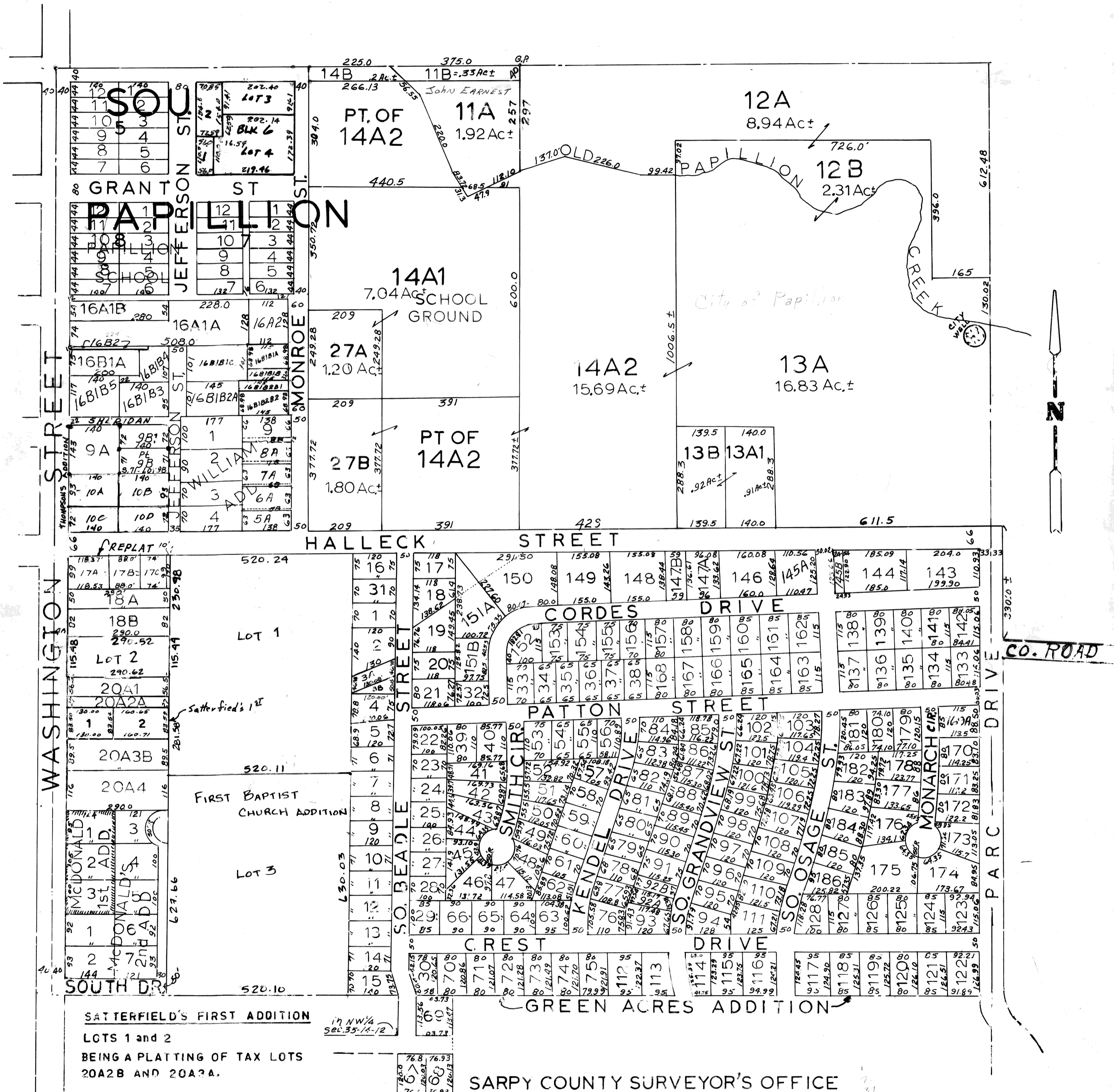


SW 1/4 SEC. 26-T14N-R12E.
SCALE - 1" = 200'



SATTERFIELD'S FIRST ADDITION
LOTS 1 and 2
BEING A PLATTING OF TAX LOTS
20A2B AND 20A3A.

SARPY COUNTY SURVEYOR'S OFFICE
APRIL, 1958

Revised
4-6-60
8-31-61
5-18-62
1-10-63
5-15-64
2-23-83
4-10-87
04-20-01 Plat
10-17-08 AC