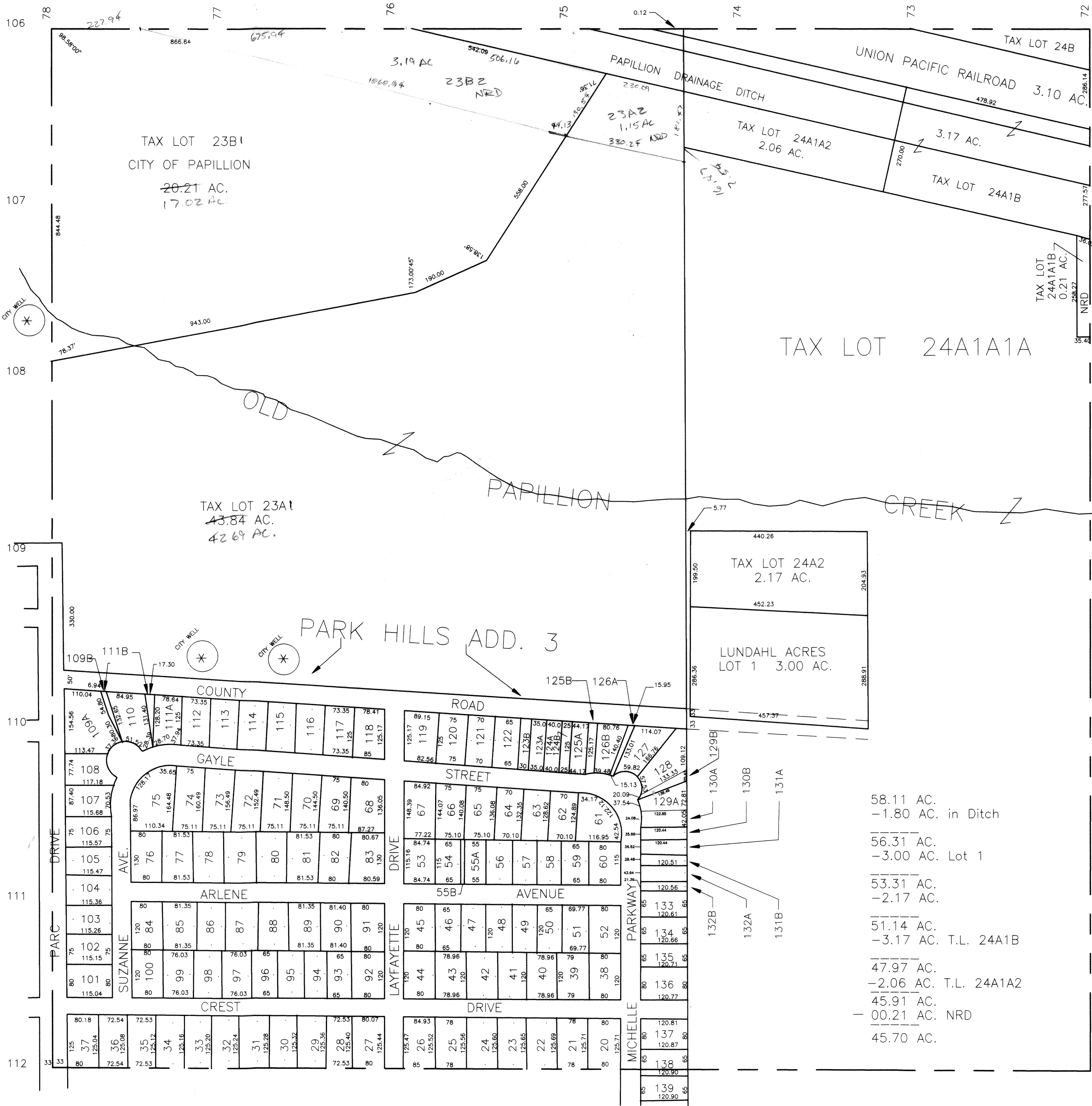


SE 1/4 SEC.26-T14N-R12E
SCALE 1" = 200'

1001



- 58.11 AC.
-1.80 AC. in Ditch
- 56.31 AC.
-3.00 AC. Lot 1
- 53.31 AC.
-2.17 AC.
- 51.14 AC.
-3.17 AC. T.L. 24A1B
- 47.97 AC.
-2.06 AC. T.L. 24A1A2
- 45.91 AC.
-00.21 AC. NRD
- 45.70 AC.

REVISIONS

- 4-5-73
- 3-11-77
- 2-22-78
- 11-17-87
- 12-19-89
- 9-11-92
- 3-11-93
- 11-04-94
- 03-20-95
- 05-11-95

