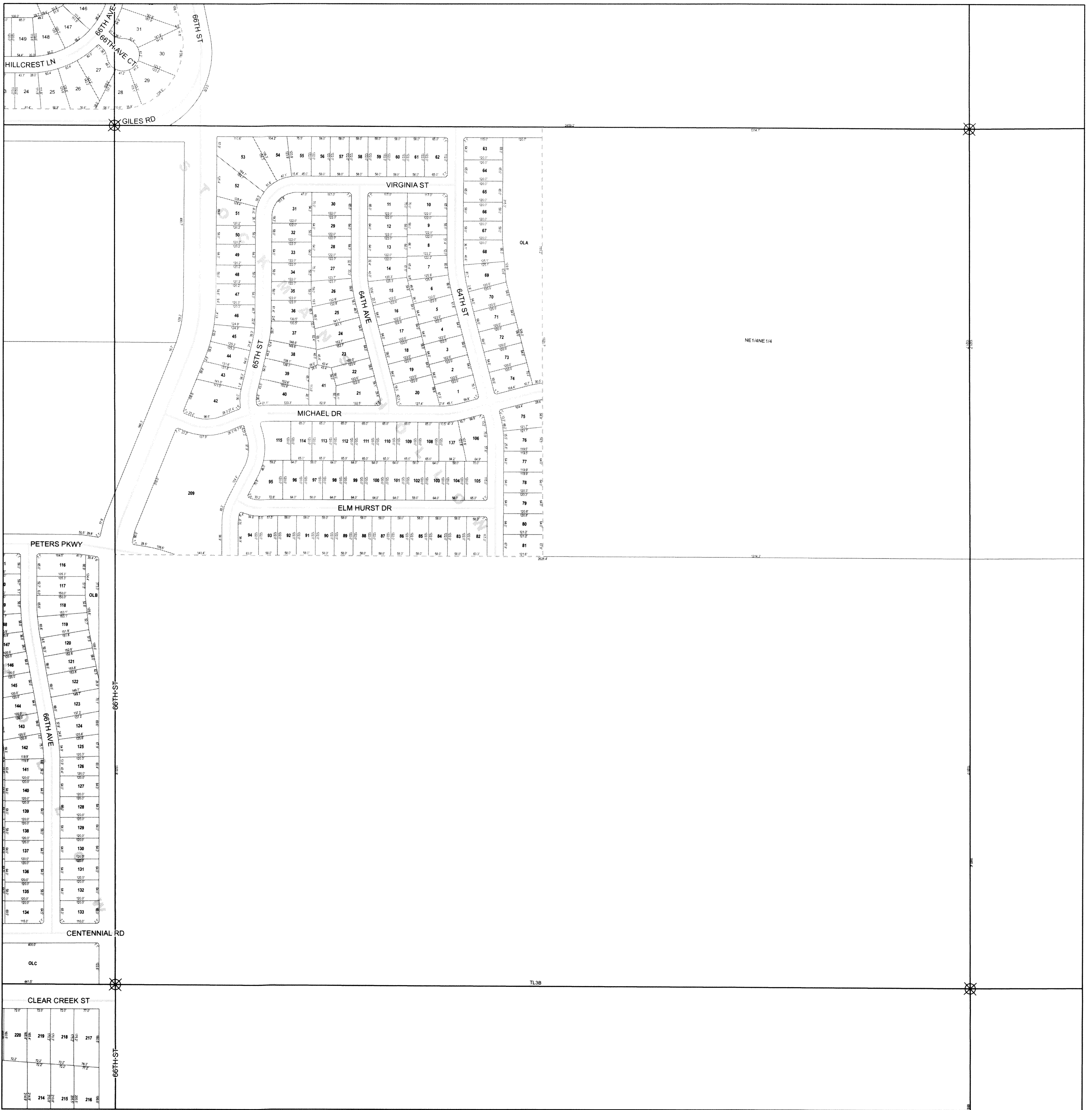
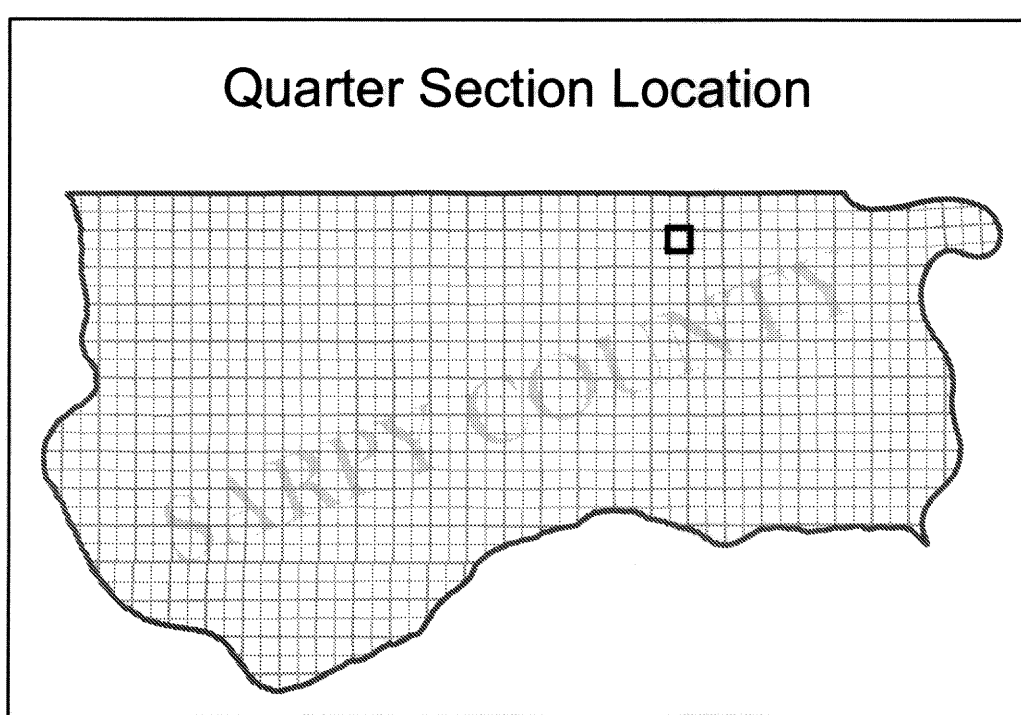


NE1/4 SEC 24 T14N R12E

1 inch equals 200 feet



SARPY COUNTY
SURVEYOR'S OFFICE



- Legend**
- Lots
 - Quarter Sections
 - Subdivisions
 - Blocks
 - Railroads
 - Street Centerline
 - Corners

This Map Was Printed On:
8/28/2007

NOTICE

This map constitutes a representation based on information provided to the Sarpy County Surveyors Office by other individuals and organizations. Therefore no representations regarding the accuracy of the size, dimensions, measurements, condition, platting, or location of the within described area are made. Should such information be required for construction, zoning, or other purposes, the services of a private surveyor and/or title search should be secured.