

SW 1/4-SEC.23-T14N-R12E.  
SCALE-1" = 200'

Tara Heights

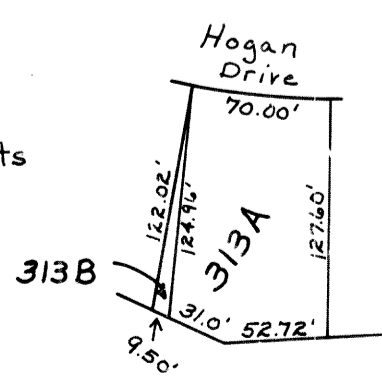
1/4 Sec. Line



STATE HIGHWAY #85  
84th ST.



\*  
Note: Lot 313  
Tara Heights



SARPY COUNTY SURVEYORS OFFICE  
OCTOBER 1966

TH 10-15-72  
- 6-6-75  
4-30-80  
1-27-87  
6-1-93  
11-30-94  
03-16-00-Plat