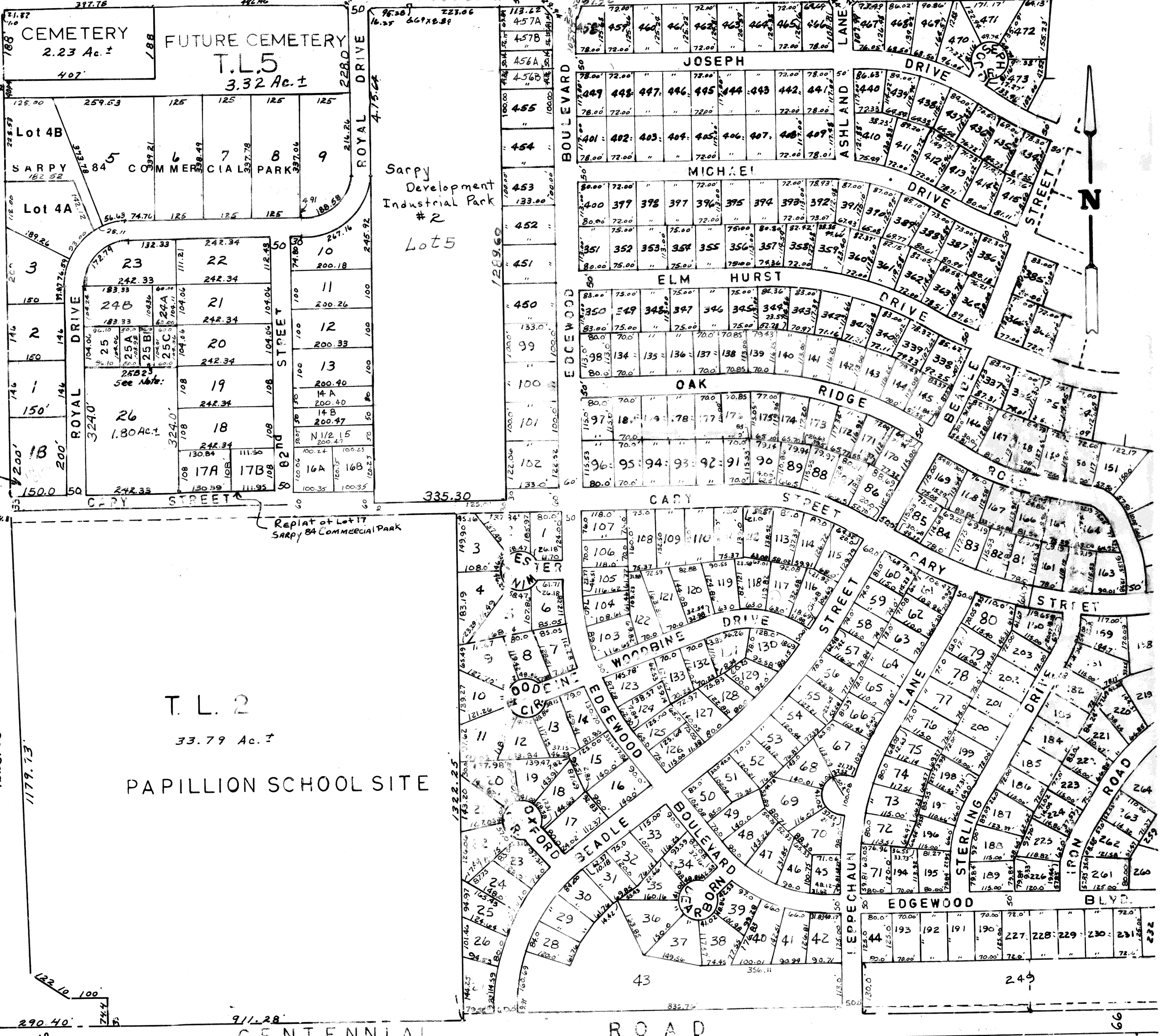


NW 1/4 SEC. 23-14-12

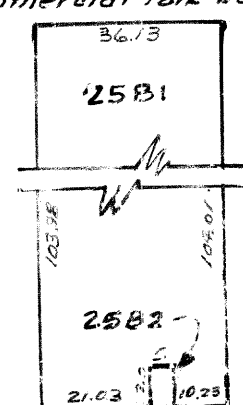
SCALE: 1" = 200'

HICKORY HILL

COUNTY ROAD OR GILES ROAD



Note: Lot 25B1 Sarpy 80 Commercial Park Replat Lot 25



Not to Scale

SARPY COUNTY SURVEYOR
APRIL 1970

- REVISED
- 2-15-73
 - 2-24-92
 - 8-11-75
 - 10-8-92
 - 4-6-79
 - 6-16-93
 - 4-8-80
 - 4-22-78
 - 11-3-82
 - 2-24-83
 - 17-21-83
 - 8-1-84
 - 8-19-88
 - 1-17-90
 - 10-29-90