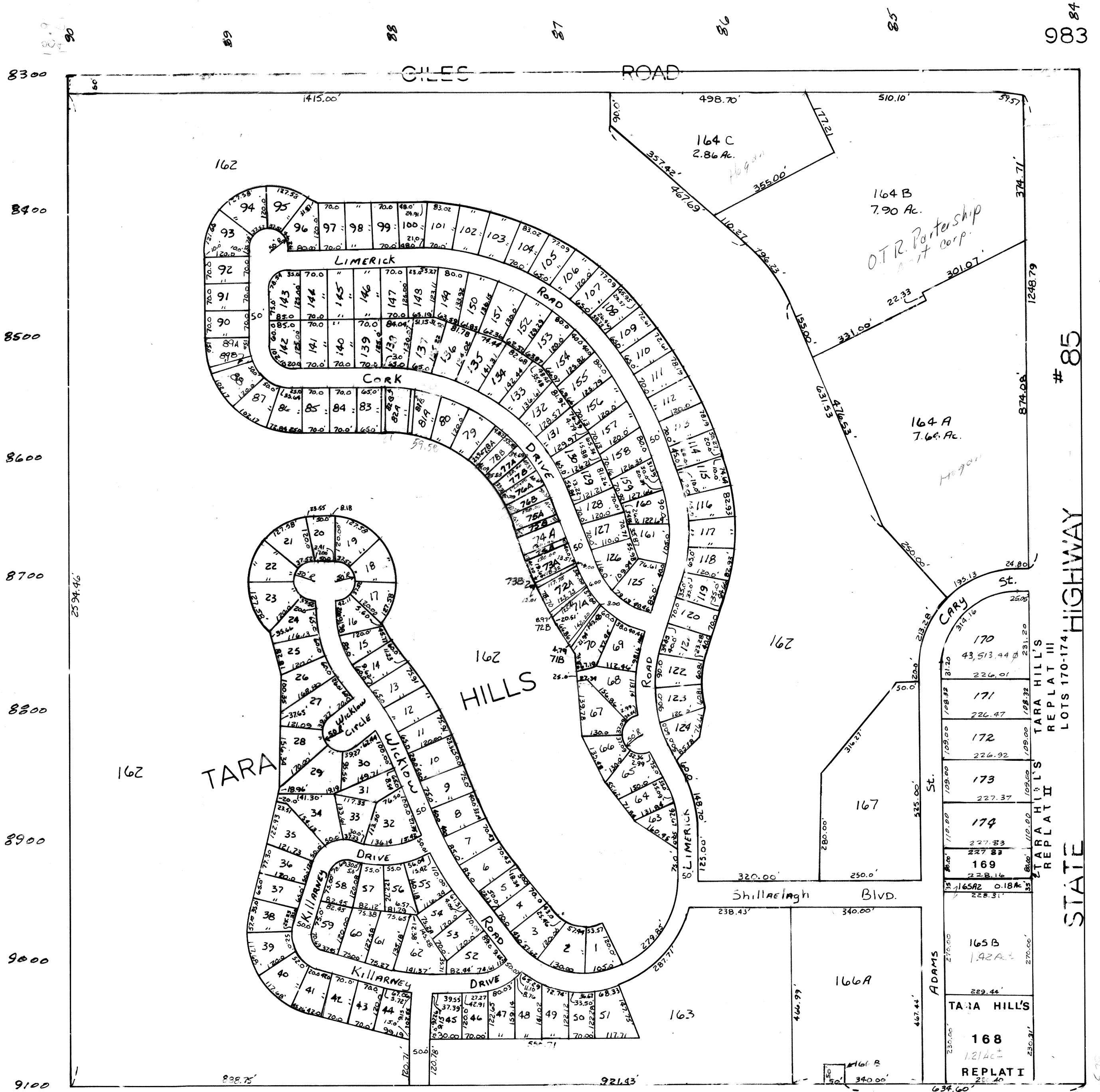


NE 1/4 SEC. 22 T14N, R12E
SCALE — 1" = 200'



SARPY COUNTY SURVEYOR'S OFFICE
AUGUST — 1978

REVISED

- 5/26/81 515193
- 9/25/81
- 2/12/87
- 7/8/87
- 11/7/88
- 6-3-88
- 11-4-88
- 2-27-89
- 5-24-91
- 12-13-91
- 3-31-92
- 4-28-92